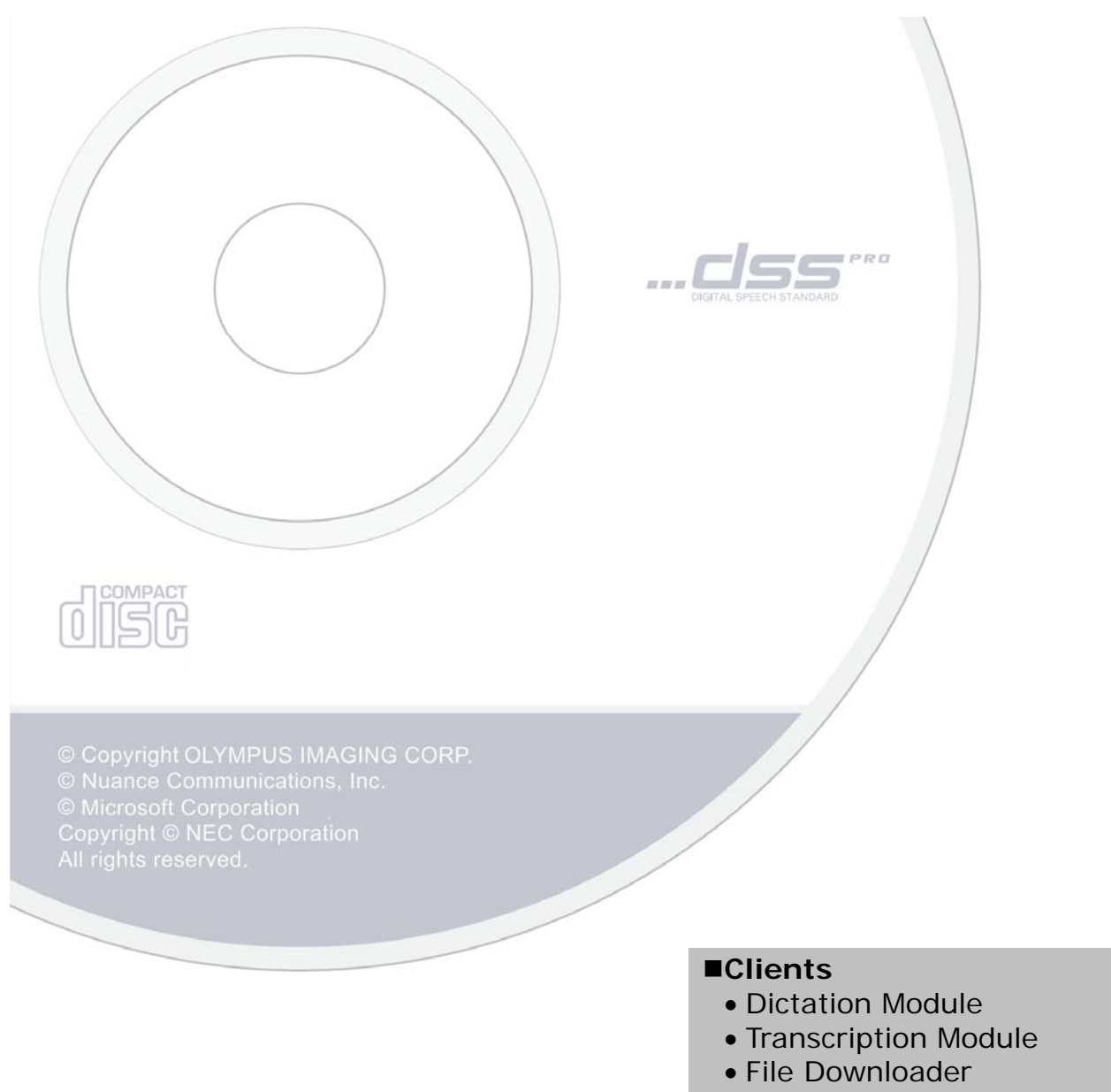




Olympus Dictation Management System R6

Installation Guide



Contents

■ Trademarks and Copyrights.....	4
1 INTRODUCTION.....	5
1.1 System Requirements.....	6
1.2 Contents of the Installation CD.....	8
1.3 ODMS Components.....	9
2 SYSTEM CONFIGURATIONS.....	11
2.1 Standalone System Configuration.....	12
2.2 Workgroup System Configuration.....	14
2.3 Using Dictation Module/Transcription Module in a Virtual Environment.....	16
2.3.1 Using Citrix XenApp and Windows Terminal Services.....	16
2.3.2 Using Citrix XenDesktop and VMware View.....	18
3 PREPARATION BEFORE INSTALLATION.....	19
3.1 Licenses.....	20
3.1.1 Dictation Module/Transcription Module.....	20
3.1.2 File Downloader.....	20
3.1.3 System Configuration Program/License Manager (Workgroup Only).....	21
3.2 Determining the System Configuration.....	22
4 INSTALLING DICTATION MODULE/TRANSCRIPTION MODULE.....	23
4.1 New Installation.....	24
4.1.1 Standalone System Installation.....	24
4.1.2 Workgroup System Installation.....	30
4.2 Adding an Application.....	37
5 SILENT INSTALL.....	39
5.1 Preparing Automatic Installation Package.....	40
5.1.1 Preparing .NET Framework.....	41
5.1.2 Preparing an Installation Package.....	42
5.1.3 Obtaining Multi-license ID (license.dat file).....	44
5.1.4 Creating CustomConfig.xml (Optional).....	45
5.2 Application Deployment via Group Policy.....	47
5.2.1 Register Organization Unit for Application Deployment.....	47
5.2.2 Register Group Policy.....	49
5.3 Application Deployment via Log-on Script.....	54

6 UPGRADING INSTALLATION	56
6.1 Upgrade from DSS Player Pro R5/R4 Standalone System.....	57
6.1.1 Upgrading Using a CD	58
6.1.2 Upgrading with Silent Install	63
6.2 Upgrade from DSS Player Pro R5 Workgroup System	64
6.3 Update Olympus Dictation Management System R6 to Later version	71
6.3.1 Auto Update from the Olympus Update Server.....	71
6.3.2 Simple Update under the Same Type of Installation.....	72
6.3.3 Automatic Update Using SCP (Workgroup Configuration Only).....	74
7 INSTALLING FILE DOWNLOADER	77
7.1.1 New Installation	78
7.1.2 Starting the Program	81
8 REFERENCE INFORMATION.....	82
8.1 How to Use Installation Options.....	83
8.1.1 MSI Installation Options	84
8.1.2 Example Installation Options.....	85
8.2 How To Open a Port on the Firewall.....	87
9 TROUBLESHOOTING	88
9.1 Launcher Not Starting.....	89
9.2 If Default Port Number Is Being Used by IIS or Other Service.....	91
9.3 Cannot Launch Dictation Module or Transcription Module.....	91
9.4 Cannot Install.....	91
10 SUPPORT CONTACTS.....	93

■ Trademarks and Copyrights

- Microsoft, Windows, Windows Media, Windows Media Player, Windows Server, Outlook, DirectX, Active Directory, and DirectShow are trademarks or registered trademarks of Microsoft Corporation in the United States and/or other countries.
- Citrix, ICA (Independent Computing Architecture), MetaFrame, and Program Neighborhood are trademarks or registered trademarks of Citrix Systems, Inc. in the United States and/or other countries.
- Nuance, the Nuance logo, Dragon, Dragon NaturallySpeaking, and RealSpeak are trademarks and/or registered trademarks of Nuance Communications Inc., and/or its affiliates in the United States and/or other countries.
- GroupWise, Netware, and Novell are trademarks or registered trademarks of Novell, Inc., and/or its affiliates in the United States and/or other countries.
- Lotus Domino and Lotus Notes are trademarks or registered trademarks of IBM Corporation and/or its affiliates in the United States and/or other countries.
- Baltech Transponder is a trademark or registered trademark of BALTECH AG and/or its affiliates in the United States and/or other countries.
- Inner Media, DynaZip, and Active Delivery are trademarks or registered trademarks of Inner Media Inc. and/or its affiliates in the United States and/or other countries.
- SocketTools is a trademark or registered trademark of Catalyst Development Corporation.
- Other company and product names mentioned in this document are trademarks or registered trademarks of their respective owners.

1 Introduction

Olympus Dictation Management System R6 (ODMS R6) is a Dictation/Transcription system that supports assignments of various sizes, from individual users to multiple users. It can be used to capture audio data highly compressed with an Olympus IC recorder (hereinafter referred to as “the recorder”), and allows for real-time playback, editing, and insertion of index information.

ODMS R6 and the recorder support the playback of DSS, an international standard for audio recording, Microsoft-promoted WMA, and MP3.

With peripheral devices connected, such as a DirectRec or a foot switch, it provides a variety of additional functions, including audio streaming recording and remote control playback.

The Workgroup system supports Citrix XenApp, VMware View, and other virtual environments.

It also supports Terminal Services provided by Windows Server products, allowing this product to be used via the Terminal Services Client Virtual Driver.

In addition to DSSPlayer Pro R5 features, ODMS R6 offers the following functions:

- Enhanced compatibility with Nuance Dragon NaturallySpeaking
- Enhanced direct recording functions using Olympus Directrec devices
- Citrix XenDesktop and VMware View support
- Addition of new applications specialized for downloading dictation files
- System management functions that enable sharing with DSSPlayer Pro R5

For ODMS R6 installation procedures, please consult this Installation Guide.

For information about ODMS R6 functions, please consult Help of the individual applications after installation.





For the latest information, please visit the Olympus Web site at <http://www.olympus-global.com/en/global/>.

1.1 System Requirements

The following table lists the operating conditions.

Item	Condition
OS	<p>■ Standalone System</p> <p>Microsoft® Windows® XP</p> <ul style="list-style-type: none"> • Professional Edition/Home Edition SP3 (x86) • Professional Edition/Home Edition SP2 (x64) <p>Microsoft® Windows Vista®</p> <ul style="list-style-type: none"> • Ultimate/Enterprise/Business/Home Premium/Home Basic SP2 (x86/x64) <p>Microsoft® Windows® 7</p> <ul style="list-style-type: none"> • Ultimate/Enterprise/Professional/Home Premium (x86/x64) <p>Microsoft® Windows® 8</p> <ul style="list-style-type: none"> • Enterprise/Pro/Windows 8 (x86/x64) <p>■ Workgroup System</p> <p>Microsoft® Windows® XP</p> <ul style="list-style-type: none"> • Professional Edition SP3 (x86) • Professional Edition SP2 (x64) <p>Microsoft® Windows Vista®</p> <ul style="list-style-type: none"> • Ultimate/Enterprise/Business SP2 (x86/x64) <p>Microsoft® Windows® 7</p> <ul style="list-style-type: none"> • Ultimate/Enterprise/Professional (x86/x64) <p>Microsoft® Windows® 8</p> <ul style="list-style-type: none"> • Enterprise/Pro (x86/x64) <p>Microsoft® Windows Server® 2003 SP2 (x86/x64)</p> <p>Microsoft® Windows Server® 2003 R2 SP2 (x86/x64)</p> <p>Microsoft® Windows Server® 2008 SP2 (x86/x64)</p> <p>Microsoft® Windows Server® 2008 R2 SP1 (x86/x64)</p> <p>Microsoft® Windows Server® 2012 (x64)</p>
CPU	<p>Microsoft® Windows® XP: 1 GHz or higher</p> <p>Microsoft® Windows Vista®: 1 GHz or higher</p> <p>Microsoft® Windows® 7: 1 GHz or higher</p> <p>Microsoft® Windows® 8: 2 GHz or higher</p> <p>Microsoft® Windows Server® 2003: 1 GHz or higher</p> <p>Microsoft® Windows Server® 2008: 2 GHz or higher</p> <p>Microsoft® Windows Server® 2012: 2 GHz or higher</p>
Memory	<p>Microsoft® Windows® XP: 256 MB or more</p> <p>Microsoft® Windows Vista®: 1 GB or more</p> <p>Microsoft® Windows® 7: 1 GB or higher (x86)/2 GB or more (x64)</p> <p>Microsoft® Windows® 8: 1 GB or more (x86)/2 GB or more (x64)</p> <p>Microsoft® Windows Server® 2003: 256 MB or more</p> <p>Microsoft® Windows Server® 2008: 2 GB or more</p> <p>Microsoft® Windows Server® 2012: 2 GB or more</p>
HDD Space	At least 2 GB of free space
.NET Framework	.NET Framework 4.0 or later
Drive	CD-ROM drive installed
Display	1024 x 768-pixel resolution or higher 65,536 colors or more (16.77 million colors or more recommended)
Browser	Microsoft® Internet Explorer 6.0 or later (with the latest Service Pack applied)
USB	With the Dictation Module and Transcription Module: One or more USB ports available
Audio Device	With the Dictation Module and Transcription Module: A Microsoft WDM- or MME-compliant and Windows-compatible sound device
MS Office	<p>■ Microsoft Office</p> <p>Office 2003/2007 (32-bit)</p> <p>Office 2010/2013 (32-bit/64-bit)</p>
Voice recognition	<p>■ Dragon NaturallySpeaking</p> <p>Dragon NaturallySpeaking® 10.0 SP1 or later/11/12</p>

software	<ul style="list-style-type: none"> - Professional - Legal <div style="border: 1px solid black; padding: 5px; margin-top: 10px;"> <p>NOTE:</p> <ul style="list-style-type: none"> - ODMS R6 does not formally support any other versions/editions than listed above. - ODMS supports all languages supported by Dragon NaturallySpeaking. To match Dragon's language and Windows language setting is required. - Voice recognition functions are not supported when ODMS R6 is being used in a virtual environment. </div>
Virtual Environment Platform (Workgroup System only)	<ul style="list-style-type: none"> ■ Remote Desktop Service (Windows Terminal Service) <ul style="list-style-type: none"> Microsoft® Windows Server® 2003/2008/2012 *Requires separate RDS (TS) CAL License. ■ RemoteApp <ul style="list-style-type: none"> Microsoft® Windows Server® 2008/2012 *Requires separate RDS CAL license. <div style="border: 1px solid black; padding: 5px; margin-top: 10px;"> <p>NOTE:</p> <ul style="list-style-type: none"> - In Windows Server 2003, TS CAL license is required to use ODMS on Terminal Service. - In Windows Server 2008/2012, RDS CAL license is required to use ODMS on Remote Desktop Service or RemoteApp. </div> <ul style="list-style-type: none"> ■ Citrix XenApp <ul style="list-style-type: none"> ➢ XenApp 5/6/6.5 ■ Citrix Desktop <ul style="list-style-type: none"> ➢ XenDesktop 4/5/5.6 ■ Citrix Client <ul style="list-style-type: none"> ➢ Citrix Client applications listed below are supported for each product: <ul style="list-style-type: none"> - Citrix Online Plug-in 12.0.0 or later - Citrix Receiver 3.0 or later <div style="border: 1px solid black; padding: 5px; margin-top: 10px;"> <p>NOTE:</p> <ul style="list-style-type: none"> - Using Citrix virtual environments requires a separate Citrix user license. </div> <ul style="list-style-type: none"> ■ VMware View <ul style="list-style-type: none"> ➢ VMware View 4.5/5 (VMware View Clients 5.0 or later is required) <div style="border: 1px solid black; padding: 5px; margin-top: 10px;"> <p>NOTE:</p> <ul style="list-style-type: none"> - Using VMware View requires a separate VMware View user license. </div>
Supported Languages	English, French, German, Spanish, Russian, Swedish, Czech

	Installing ODMS R6 requires Administrator privileges.
	Currently supported operating systems are listed on our Web page. For the latest information, please visit the Olympus Web site at http://www.olympus-global.com/en/global/ .

1.2 Contents of the Installation CD

Inserting the installation CD automatically starts a launcher.

After the launcher starts, you can install the following applications:

- ODMS Dictation Module
- ODMS Transcription Module
- File Downloader
- Microsoft .net Framework 4

→ [9.1 Launcher Not Starting](#)

Olympus Dictation Management System R6 Clients CD

The following are the CD contents.

Folder Name	Description
ODMS_R6	Folder that contains the Dictation Module and Transcription Module installer. A single installer installs either the Dictation Module or Transcription Module, or both modules in accordance with the license key.
FileDownloader	Folder that contains the File Downloader installer. Install the File Downloader when you need mainly file download capabilities, without the rich functionality of the Dictation Module and Transcription Module.
DotNet	Folder that contains the .NET Framework installer.
InstallManual	Folder that contains Install Guides in various languages



Various applications (System Configuration Program, etc.) with ODMS R6 management functions are on the separate ODMS R6 Administrator's CD.

1.3 ODMS Components

- **Dictation Module**

This is an application for an author. It is mainly used to download a dictation file recorded with a DVR (Digital Voice Recorder), or to record a dictation file directly onto a PC. It can automatically send a downloaded or directly recorded dictation file via email or FTP. It also has the ability to automatically receive a transcribed document file and manage it with a link to the corresponding dictation file.

- **Transcription Module**

This is an application for a transcriptionist. The application can notify the transcriptionist of the arrival of a new dictation file and switch to a smaller window at the onset for easy transcription. It automatically receives and captures dictation files, via email or FTP, for transcribing. It has document management capability that can automatically start your word processor software before transcribing, and can manage a document with a link to the corresponding dictation file. In addition, if the original dictation file was received via email or FTP, the application can automatically send a document file to a specified destination immediately after the transcription has been completed.

- **File Downloader**

File Downloader is an application that enables easy downloading of a DVR-recorded dictation file to a PC. The application starts up automatically whenever the PC is started, and remains resident in the system. When connection to a DVR is detected, the application automatically downloads its files and stores them in a specified location. The application offers a simple, efficient method of download for users.

File Downloader can be installed on a computer that has the Dictation Module and/or the Transcription Module installed, so any one of the applications can be used as required by the job at hand.

- **System Configuration Program (Workgroup System Only)**

System Configuration Program is an application for administrators, which is used when structuring a workgroup system. It facilitates the installation and updates of modules for end users (Dictation Module and Transcription Module), manages application settings for end users (authors and transcriptionists), and updates firmware.

Installing the System Configuration Program will also install the Device Customization Program at the same time. The Device Customization Program can customize, import, and export device settings.

- **License Manager (Workgroup System Only)**

This application is used to manage licenses. It manages the licenses and accounts of Dictation Module and Transcription Module in a workgroup system.

The application can change the number of license accounts by grouping multiple single licenses into one multi-license.

- **Client Virtual Driver (Workgroup System Only)**

Client Virtual Driver is installed on a client PC when running the Dictation Module and/or Transcription Module under a Citrix XenApp or Windows Server Terminal Services. It supports communication between the client PC and server, which makes it possible to use all of Dictation Module and Transcription Module functions under a virtual environment.

A Citrix XenApp driver and Windows Terminal Services driver are provided to match the virtual environment platform.

- **Repository Service (Workgroup System Only)**

For a Workgroup System, you need to create a data store, called a "repository".

A repository is a location on a network where shared files are placed in order to share data between System Configuration Program and the Dictation Module and/or Transcription Module. The repository is used to store various components of the ODMS Dictation and Transcription Module, including user profiles, software updates, and firmware updates.

2 System Configurations

Olympus Dictation Management System R6 (ODMS R6) offers a multitude of configuration options, which provide the flexibility to make the ODMS R6 deployable in any work environment ranging from the single user configuration to the medium or large network configuration. The ODMS R6 configuration is classified into 2 categories, Standalone and Workgroup configurations.

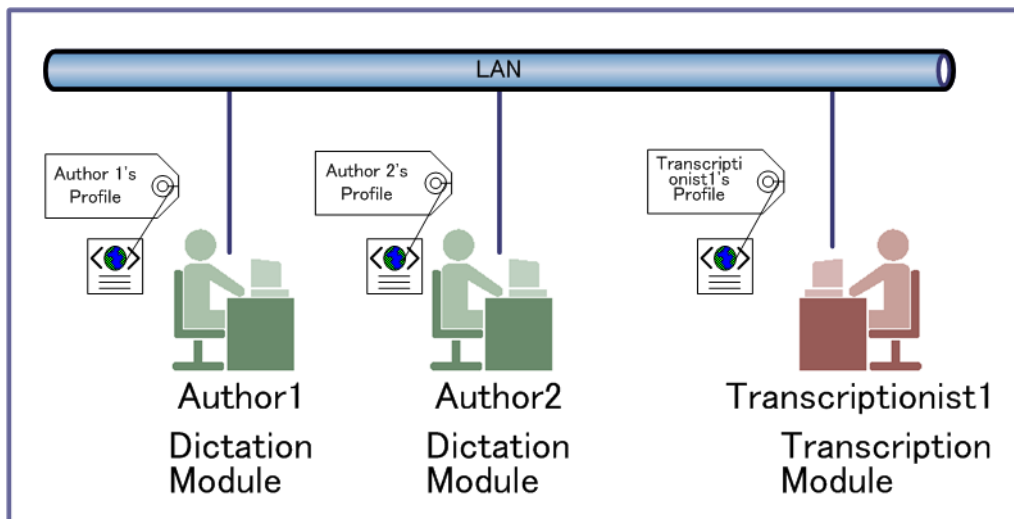
2.1 Standalone System Configuration

This configuration is suitable for smaller user environments or where neither networking nor a network server are available for use. Therefore, licensing management would not be required.

For single user installation, the individual user license ID is used to install the application to the PC. All the application configuration and user settings will be contained in this configuration and managed by the individual user. The installation is typically done interactively using the R6 Clients CD.

For multi user installation, single license ID or multi-license ID can be used in this configuration where the license is assigned to the individual application and licensing is enforced via broadcast to verify licensing when the application starts up. The drawback of this configuration is the UDP broadcast on the network every time a Dictation Module or Transcription Module is started and the management of licensing when future additions are warranted.

Multi-user installation can be performed interactively using the R6 Clients CD or deployed silently using the ODMS DM/TM Installation Package (MSI) via Active Directory, Logon Script, or third party deployment software.



Silent installation requires a multi-license ID

Multi-license ID can be obtained as an exchange for single licenses free of charge. Please contact your dealer or distributor for information about multi-license ID exchange procedure.

Required Licenses

Dictation Module single license (for ODMS)

Transcription Module single license (for ODMS)

Modules to Be Installed

Dictation Module

Transcription Module

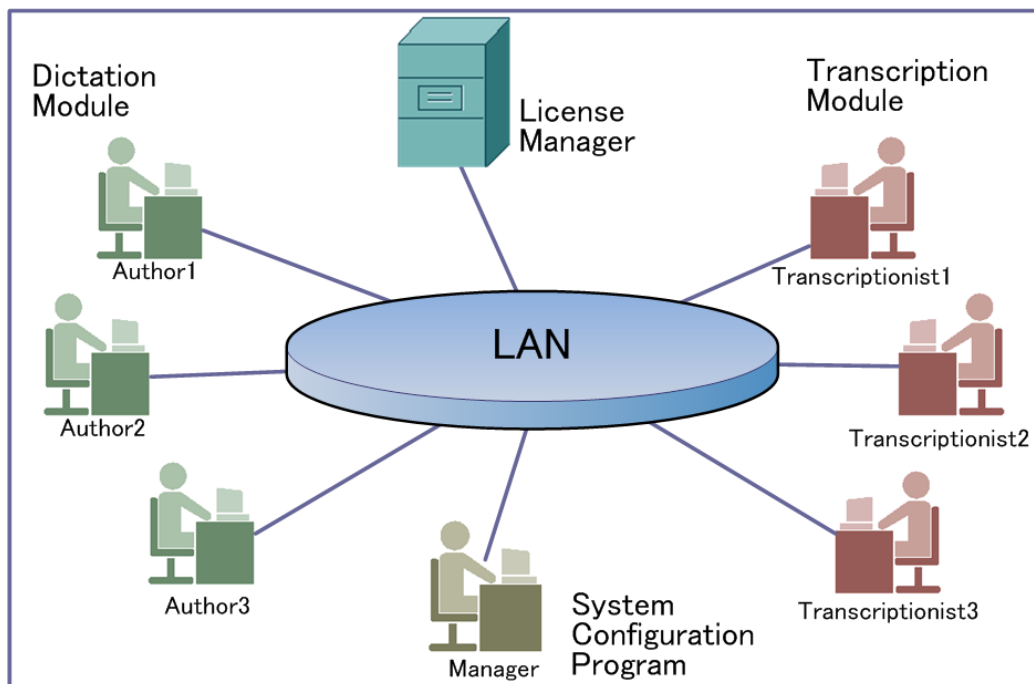
File Downloader

2.2 Workgroup System Configuration

This configuration is suitable for medium to large installations in a LAN environment. ODMS will be installed on the individual workstation but the licensing management for all the applications will be centralized using the License Manager application.

This configuration requires the use of License Manager administration application, which registers a Multi User license ID.

The benefit of using the License Manager compared to using the Multi User license ID in standalone configuration, is the centralization of the license and the communication between the applications allowing simple updates to the license when the number of users increases. In this configuration, the communication of the applications take place via HTTP instead of UDP.



It is also possible in the workgroup configuration to centralize the administrative control for user profiles, software and hardware updates by using the System Configuration Program (SCP). The SCP empowers system administrators to control the user application settings and allows the user to roam in a network environment. Software and firmware update deployment can also be managed with SCP.



The separate Olympus Dictation Management System R6 Administrators CD is required to structure a Workgroup System.

Required Licenses

Dictation Module multi-license ID

Transcription Module multi-license ID

System Configuration Program license ID (supplied with the ODMS R6 Administrators CD)

License Manager license ID (supplied with the ODMS R6 Administrators CD)

Modules to Be Installed

Dictation Module

Transcription Module

File Downloader

License Manager

System Configuration Program (optional)

Repository Service (optional)

2.3 Using Dictation Module/Transcription Module in a Virtual Environment

When using Dictation Module and/or Transcription Module in a virtual environment, the setup conditions will depend on the type of virtual environment platform.

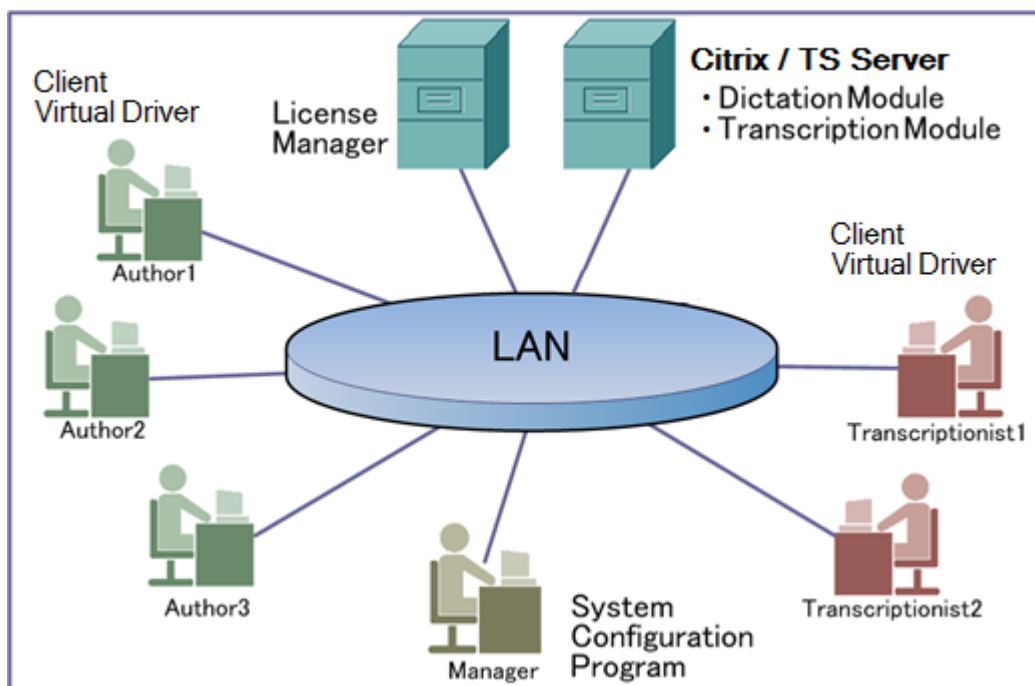
2.3.1 Using Citrix XenApp and Windows Terminal Services

To use Dictation Module and/or Transcription Module with the products listed below, you need to install the applicable Client Virtual Driver on the client PC in accordance with the product being used.

For details about Citrix XenApp and Windows Terminal Service environments, refer to System Requirements.

Dictation Module and/or Transcription Module is installed on the server, and it is accessed from the PC on which Client Virtual Driver is installed.

In this case an ODMS R6 Workgroup System needs to be structured.



Required Licenses

Dictation Module multi-license ID

Transcription Module multi-license ID

System Configuration Program license ID (supplied with the ODMS R6 Administrators CD)

License Manager license ID (supplied with the ODMS R6 Administrators CD)

Modules to Be Installed

Dictation Module (server side)

Transcription Module (server side)

Client Virtual Driver (client side)

License Manager

System Configuration Program (optional)

Repository Service (optional)



- File Downloader is not compatible with a virtual environment platform. To use File Downloader, install it directly on the client PC.
- Client Virtual Driver and Dictation Module/Transcription Module cannot be installed on the same PC.

2.3.2 Using Citrix XenDesktop and VMware View

An ODMS R6 Workgroup System needs to be structured when using ODMS R6 with the products shown below.

Dictation Module and/or Transcription module can be used by installing them in the server image files and executing the image files from each product's client software. A client virtual driver is not required by the client PC.

For details about Citrix XenDesktop and VMware View environments, refer to System Requirements.

Required Licenses

Dictation Module multi-license ID

Transcription Module multi-license ID

System Configuration Program license ID (comes with the ODMS R6 Administrators CD)

License Manager license ID (comes with the ODMS R6 Administrators CD)

Modules to Be Installed

Dictation Module

Transcription Module

License Manager

System Configuration Program (optional)



- File Downloader is not compatible with a virtual environment platform. To use File Downloader, install it directly on the client PC.

3 Preparation before Installation

This section explains the preparations that are required before installing Olympus Dictation Module Management System R6 (ODMS R6).

3.1 Licenses

ODMS features different licensing options depending on the type of installation required.

3.1.1 Dictation Module/Transcription Module

A license is required to use Dictation Module and/or Transcription Module. The following describes the Dictation Module/Transcription Module license types.

- **Single License**
Supplied with voice recorder or the transcription kit. License included with recorder is known as dictation license while license included with transcription kit is known as transcription license.
- **Multi-license**
A Multi User License (also known as a Volume License or Site License), is provided in exchange for single licenses. A Multi User License ID can be for dictation or transcription and not a combination of both.

License Requirements

Dictation Module/Transcription Module license requirements vary depending on the system. Use the appropriate license for each system.

See "[10 Support Contacts](#)" for information on how to obtain a multi-license key.

The following table shows the licensing scheme for ODMS R6 system configurations.

Available in	Required Licenses	License Server
Standalone	Dictation Module single license or multi-license Transcription Module single license or multi-license	Not required
Workgroup	Dictation Module multi-license Transcription Module multi-license	License Manager



About purchasing of a license key

Individual license ID can be purchased from Olympus. Please contact your dealer or distributor for details.

For add-on licenses to existing multi-license, please contact your dealer or distributor for details.

3.1.2 File Downloader

A license is not required to use File Downloader.

3.1.3 System Configuration Program/License Manager (Workgroup Only)

Individual License IDs are required to use the ODMS R6 System Configuration Program/License Manager. License IDs are bundled with the ODMS R6 Administrators CD.

3.2 Determining the System Configuration

Before installing ODMS R6, determine the system configuration.

For information about configurable systems, see "[2 System Configurations](#)".

After determining the system configuration, confirm the modules to be installed on individual PCs.

System Name	Modules to Be Installed	Minimum Number of Required PCs
Standalone System	Dictation Module Transcription Module File Downloader	One or more client PCs
Workgroup System	Dictation Module Transcription Module File Downloader Client Virtual Driver	One or more client PCs
	License Manager	One server PC
	Manager Tool - System Configuration Program - Device Customization Program	One or more client PCs

A standalone system requires at least one client PC.

A workgroup system needs a license server PC to manage licenses and a manager PC to manage user profiles and other configurations.

You can also install the optional Repository Service and use it as a service program to manage user profiles and update modules.

For details about Repository Service, refer to "*****".

4 Installing Dictation Module/Transcription Module

This chapter explains installation procedures for the Olympus Dictation Management System R6 (ODMS R6) Dictation Module and Transcription Module. You can install Dictation Module and Transcription Module using a CD or Active Directory Services.

- Installation using a CD needs to be performed on individual PCs.
- With the distribution method used by Active Directory Services, once settings are configured with the Active Directory domain controller, the installer automatically performs installation when each client PC is started up.

This chapter explains the procedure for installation using the CD.

For information about auto distribution installation using Active Directory, refer to "5 Silent Install".

4.1 New Installation

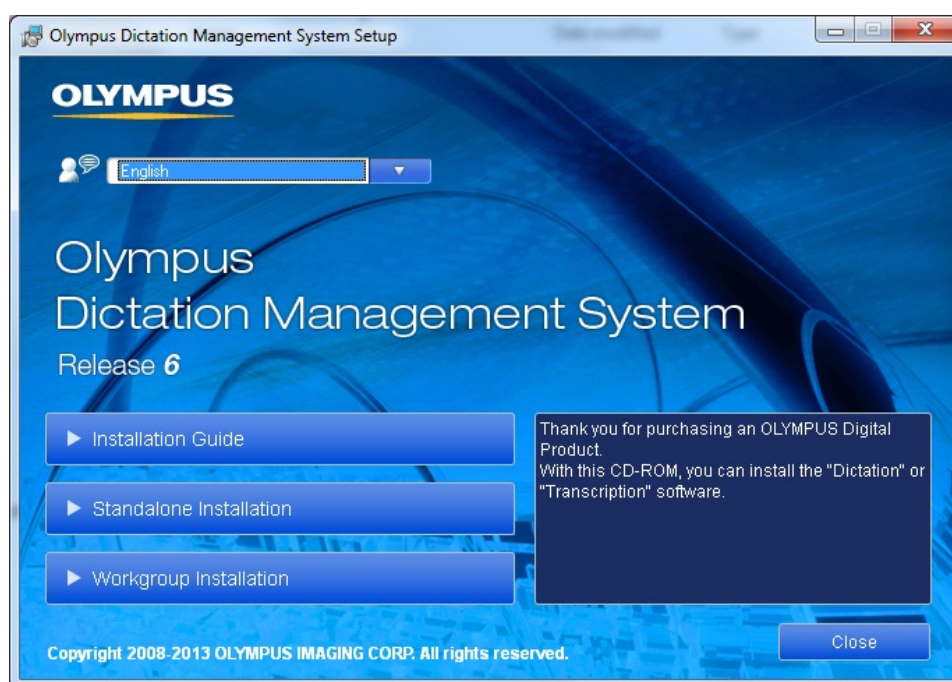
Installing ODMS R6 from the ODMS R6 Clients CD provides standard installation with limited installation options. Below is the installation procedure from the CD for standalone configuration:

4.1.1 Standalone System Installation

Perform the following steps to structure a standalone system.

■ Procedure

1. Insert the ODMS R6 Clients CD, which will automatically start a launcher.

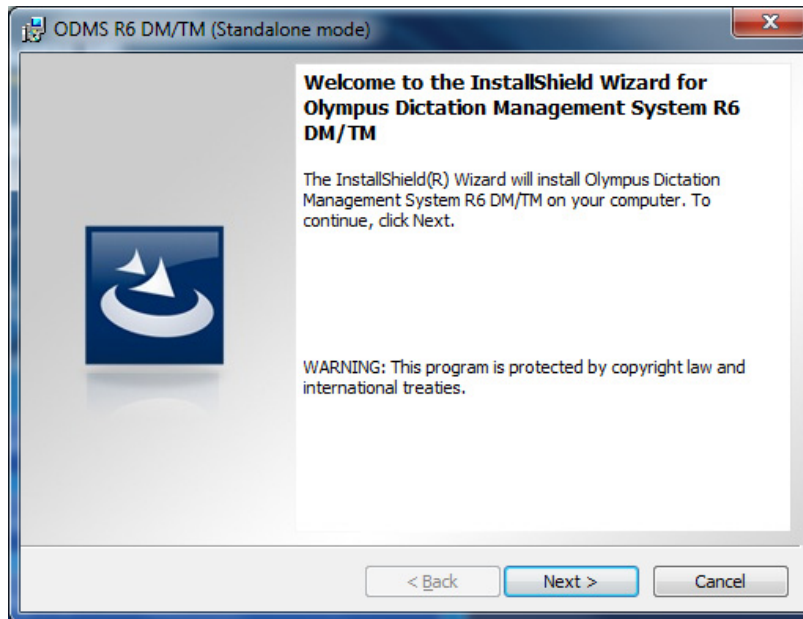


Starting the Launcher

If the launcher window does not appear after inserting the CD, select [Computer] from Windows [Start] menu, click the CD-ROM icon, then double-click "launcher.exe".

2. In the launcher window, click [Standalone Installation].

➔ The installation program will automatically start, and a welcome dialog box will appear.



3. Click [Next].

➔ The License Agreement dialog box will appear.

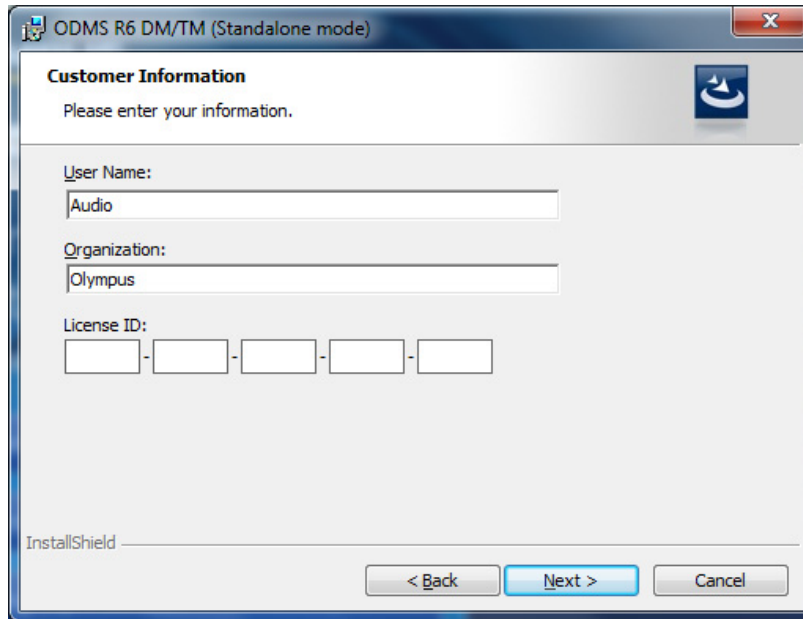


If you have already installed either Dictation Module or Transcription Module, "Program Maintenance" will appear.

To install another program additionally, please select "Modify" on "Program Maintenance", then click [Next]. The "License Agreement" will appear.

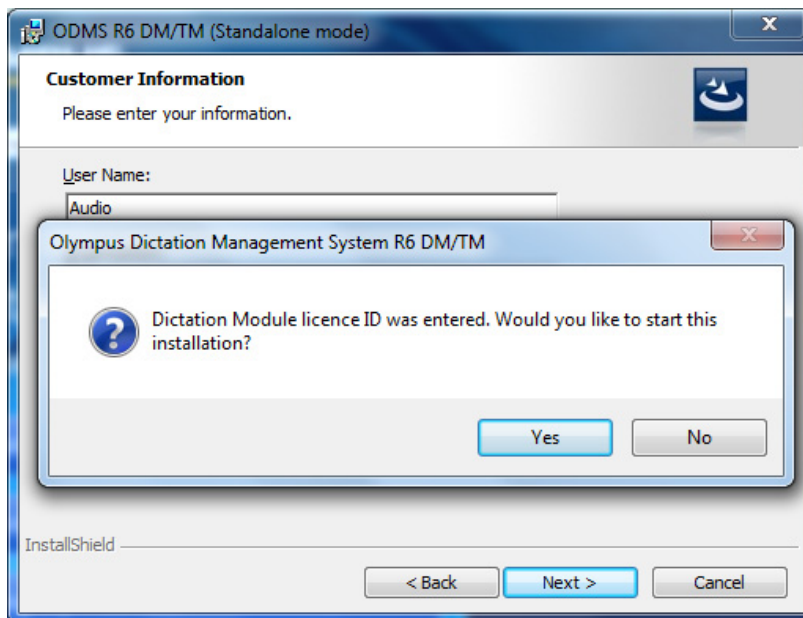
4. Accept the license agreement, and then click [Next].

➔ The Customer Information dialog box will appear.



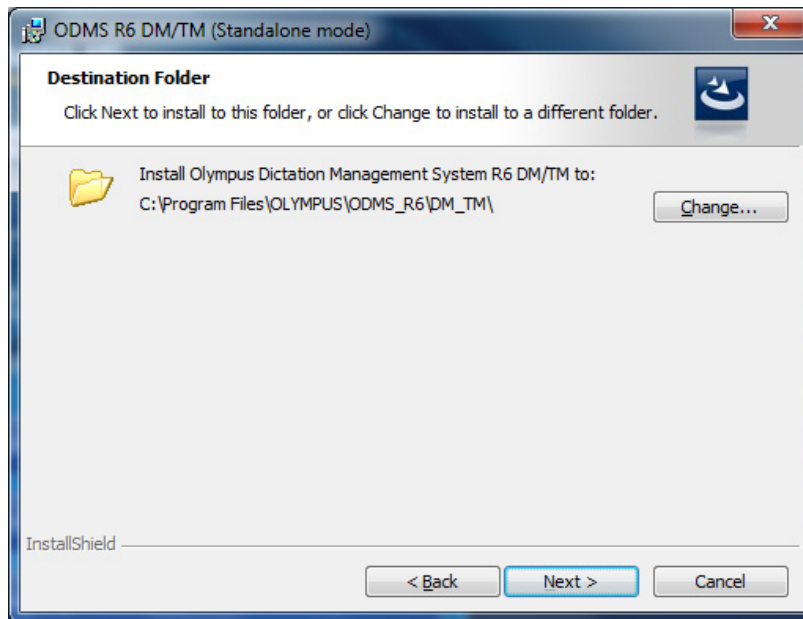
5. Enter a user name, a company name, and a license ID for a standalone system, and then click [Next].

➔ A message confirming the application to be installed will appear.



6. Check that the correct application name is displayed, and then click [Yes].

➔ The Destination Folder setting dialog box will appear.



7. Specify a program folder for installation, and then click [Next].

➔ The Select basic settings dialog box will appear.

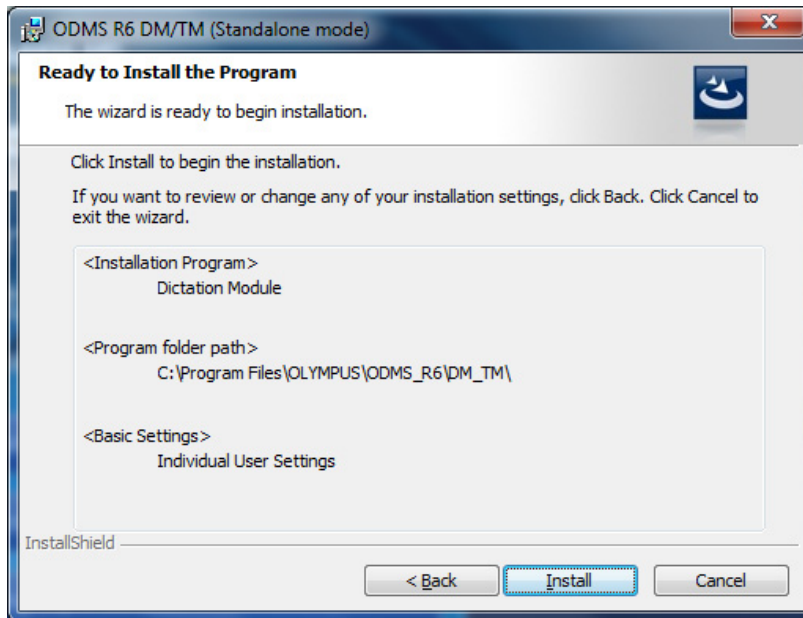


8. Specify the user profile save method, and then click [Next].

Selecting Individual User Settings enables configuration of setting management files for each user so it is possible to set the different options for each user.

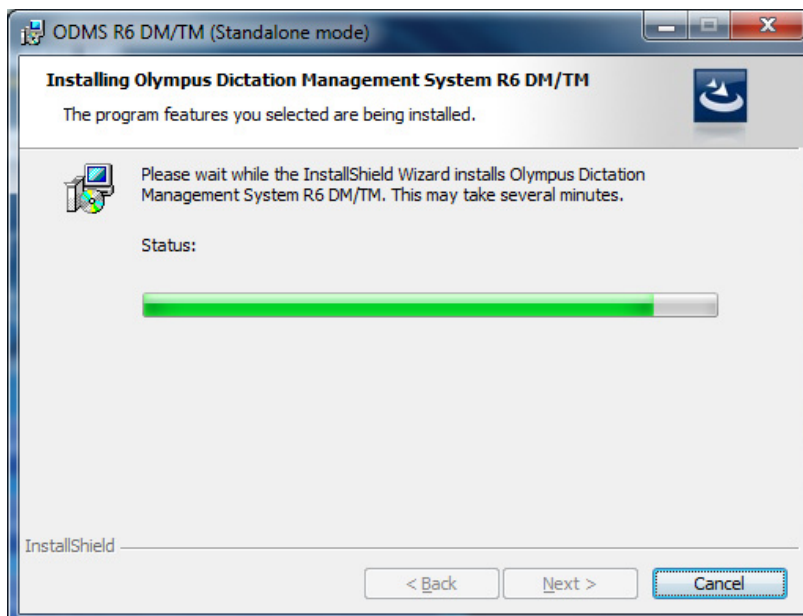
Selecting All User Settings allows all users to access only one shared setting file on the computer. Only a user who has administrative privileges can change user profiles.

→ The Ready to Install the Program dialog box will appear.

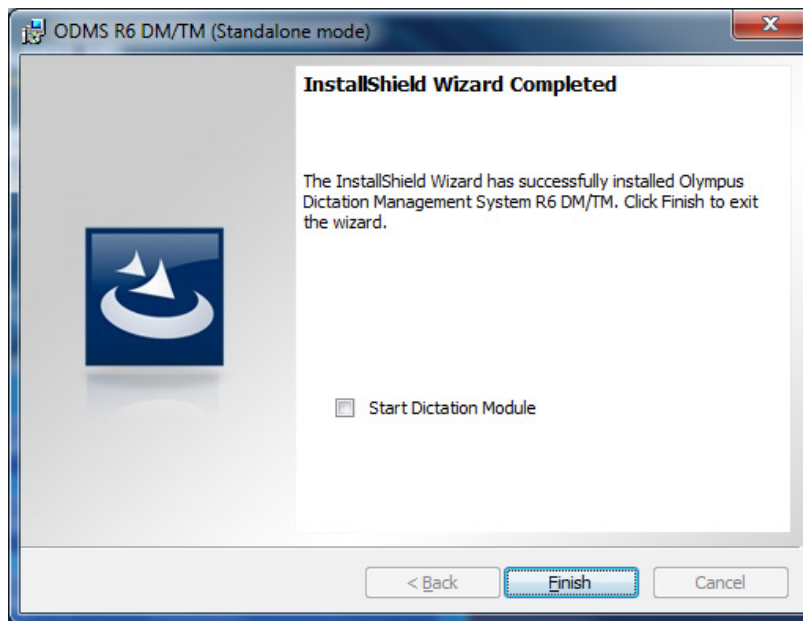


9. Check installation settings and click [Install].


→ A progress bar is displayed in a dialog box during the installation.



→ When the installation is complete, the InstallShield Wizard Completed dialog box will appear.



10. Click [Finish].

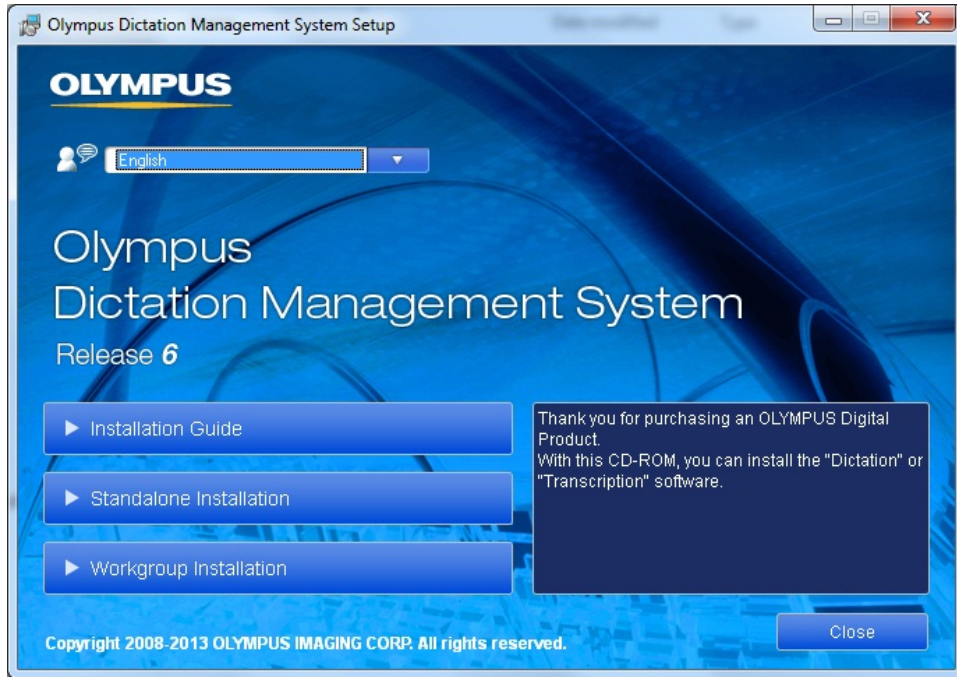
	To start the installed application when you exit the installer, select the check box on the InstallShield Wizard Completed dialog box.
---	--

4.1.2 Workgroup System Installation

Perform the procedure in this section to install the Dictation Module and/or Transcription Module in a workgroup system.

■ Procedure

1. Insert the ODMS R6 Clients CD, which will automatically start a launcher.

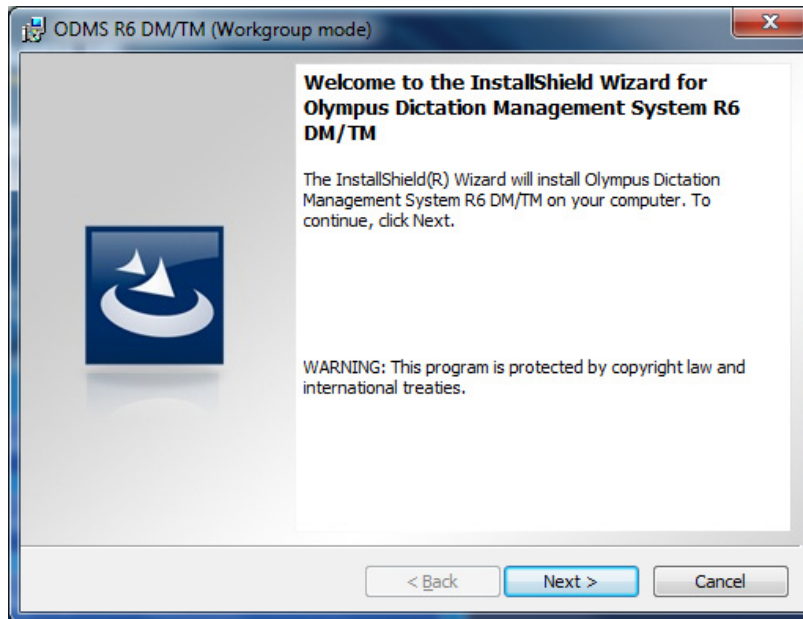


Starting the Launcher

If the launcher window does not appear after inserting the CD, select [Computer] from Windows [Start] menu, click the CD-ROM icon, then double-click "launcher.exe".

2. In the launcher window, click [Workgroup Installation].

➔ The installation program will automatically start, and a welcome dialog box will appear.



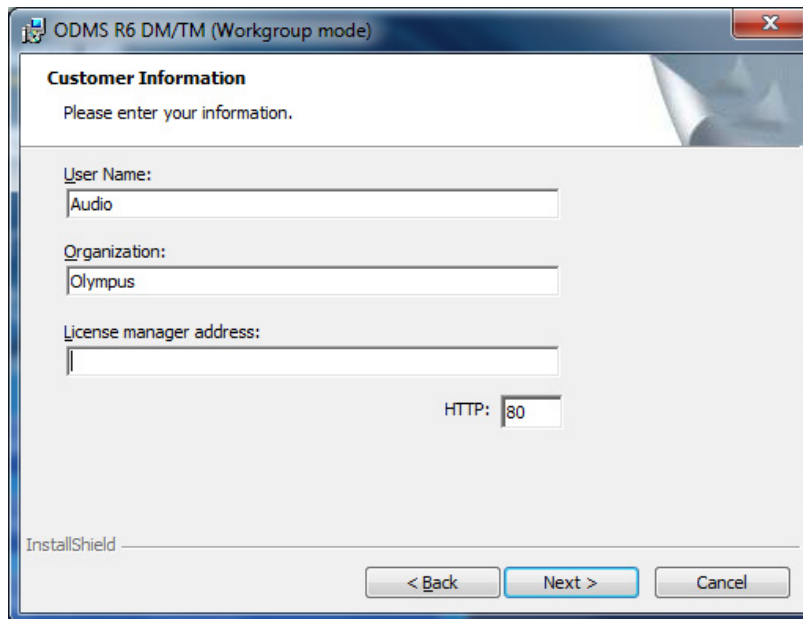
3. Click [Next].

➔ The License Agreement dialog box will appear.



4. Accept the license agreement, and then click [Next].

→ The Customer Information dialog box will appear.



ODMS R6 DM/TM (Workgroup mode)

Customer Information
Please enter your information.

User Name: Audio

Organization: Olympus

License manager address:

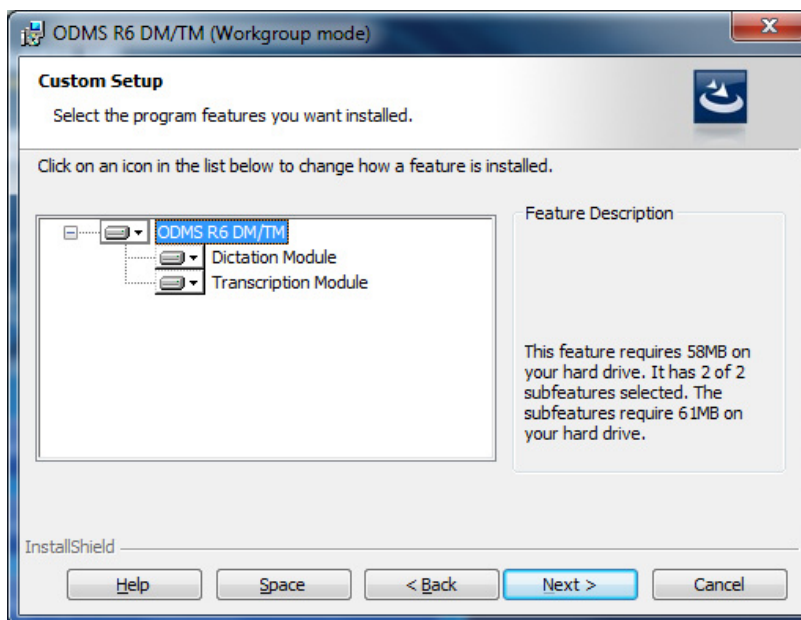
HTTP: 80

InstallShield

< Back Next > Cancel

5. Enter a user name, a company name, and license manager information, and then click [Next].

→ The Custom Setup dialog box will appear.



ODMS R6 DM/TM (Workgroup mode)

Custom Setup
Select the program features you want installed.

Click on an icon in the list below to change how a feature is installed.

ODMS R6 DM/TM
Dictation Module
Transcription Module

Feature Description

This feature requires 58MB on your hard drive. It has 2 of 2 subfeatures selected. The subfeatures require 61MB on your hard drive.

InstallShield

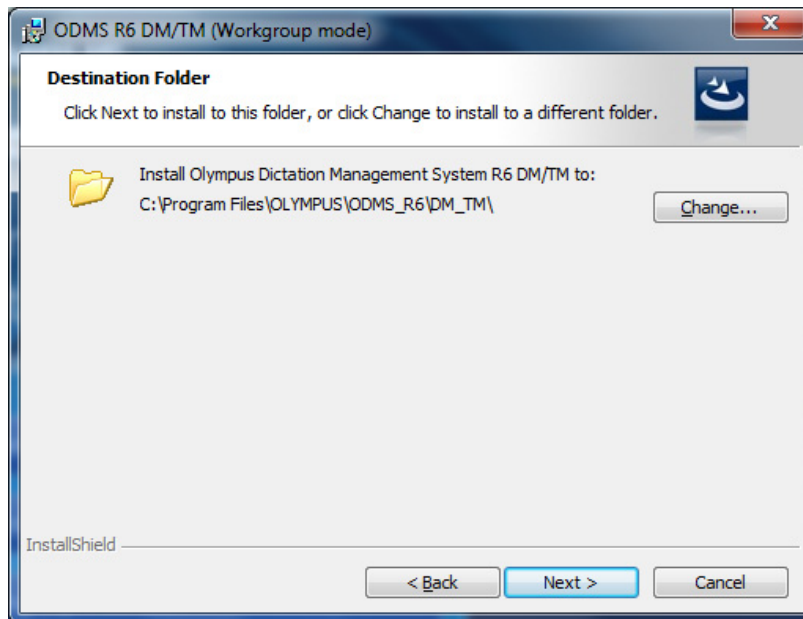
Help Space < Back Next > Cancel



- Clicking [Next] on the Customer Information dialog box will confirm access to the specified License Manager. An error message will appear if access to License Manager cannot be confirmed because License Manager is not yet set up or due to some other reason. However, installation of Dictation Module/Transcription module will be able to proceed.
- After installation, the setting screen of each application can be used to change the License Manager address and port number.

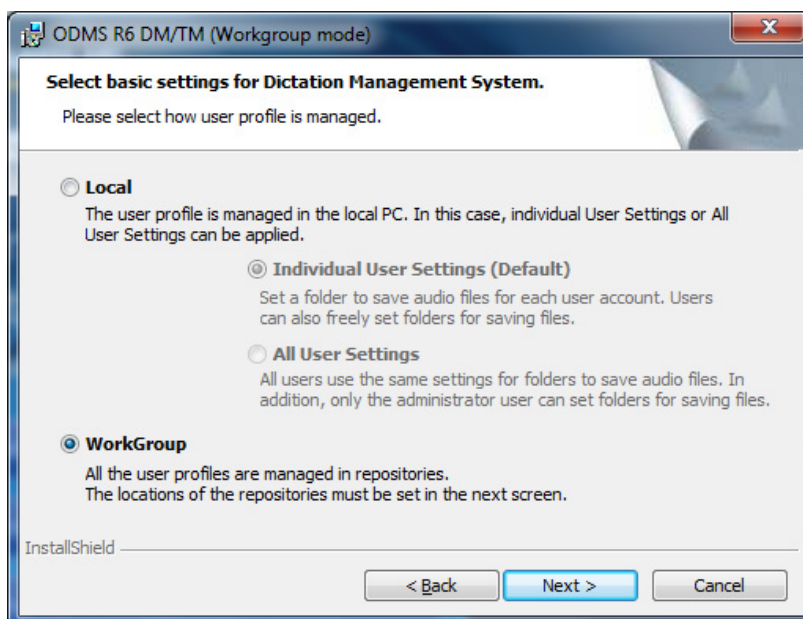
6. Select the application to be installed, and then click [Next].

➔ The Destination Folder setting dialog box will appear.



7. Specify a program folder for installation, and then click [Next].

➔ The Select basic settings dialog box will appear.



8. Specify the user profile save method, and then click [Next].

■ **[Local]**

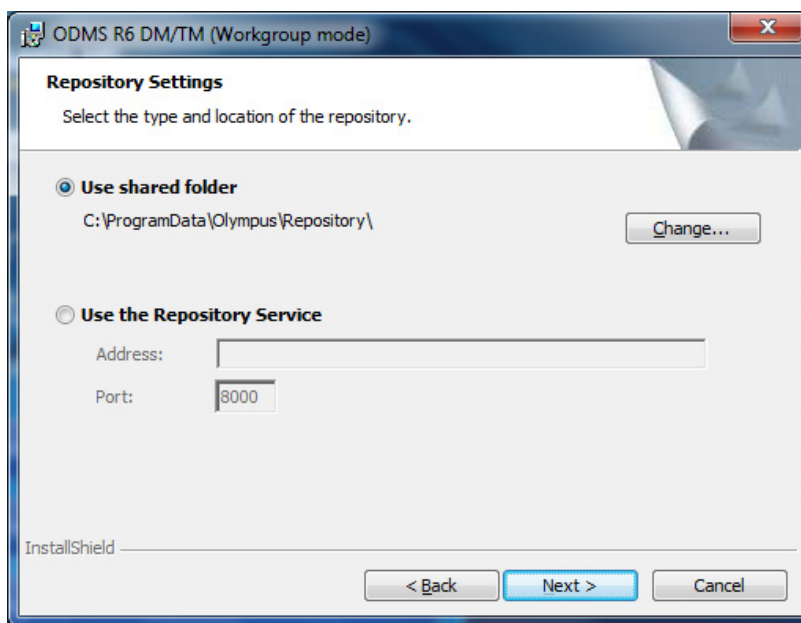
With this option, the user profile is managed on the local PC. In this case, management by the System Configuration Program is not performed.

- Selecting Individual User Settings enables management and storage of a user profile for each individual user.
- Selecting All User Settings causes the same user profile information to be used for all logged in users. Only a user who has administrative privileges can change user profiles.



■ **[Workgroup]**

With this option, user profiles are managed in repositories (shared location), and shared with administrators. User profiles can be managed from the System Configuration Program.

Selecting [Workgroup] and then clicking [Next] will display the Repository Settings dialog box.

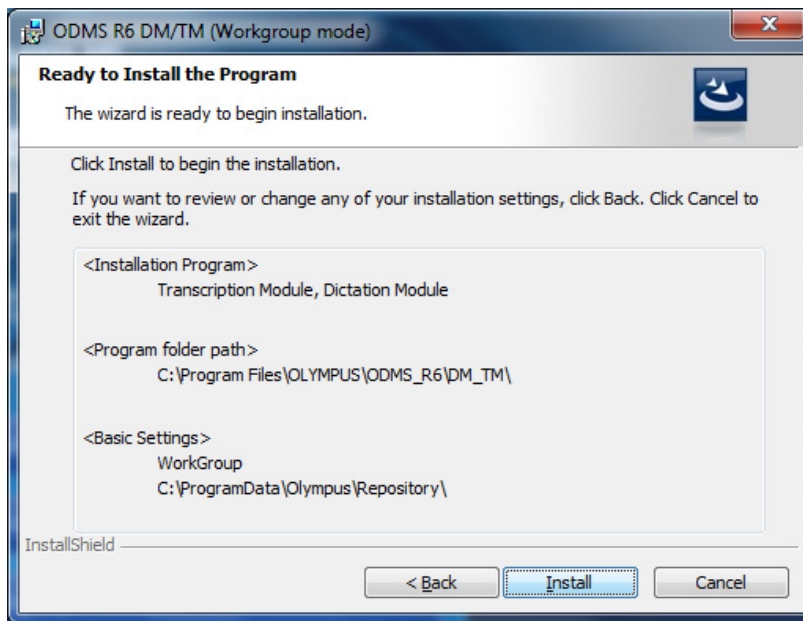


- Selecting “Use shared folder” specifies use of a shared folder type repository. Clicking the [Change...] button displays a dialog box for selecting the folder displayed here. Use the dialog box to specify the shared folder as instructed by your system administrator.

	The repository folder must be a shared folder that can be accessed by the client PC.
	When using a shared folder type repository, different folders must be used for the shared folders used by the DSS Player Pro R5 and ODMS R6 applications. Prepare one exclusive folder for DSS Player Pro R5 and one more exclusive folder for ODMS R6. When you install ODMS R6, you must specify an ODMS R6-exclusive shared folder.

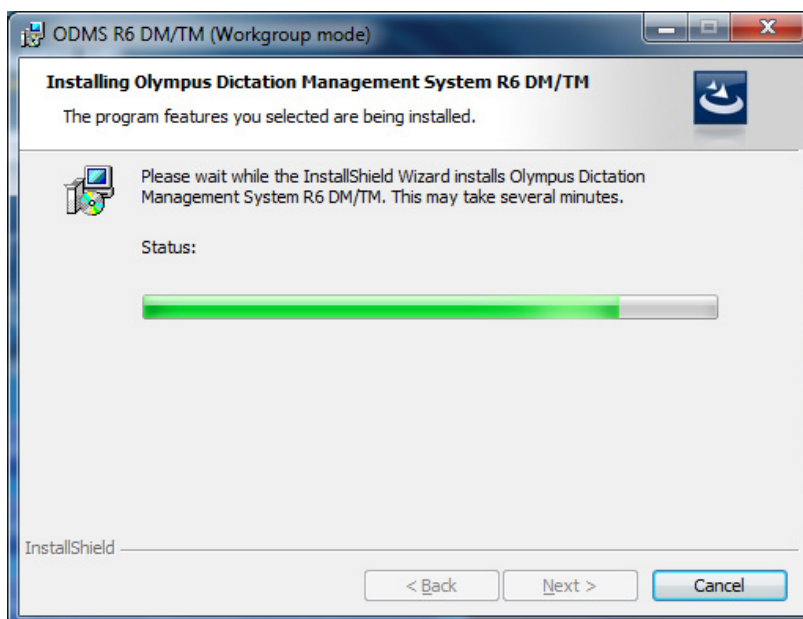
- Selecting “Use the Repository Service” specifies access to the repository via a Windows service program. For this option, specify the address and port number of the server running the repository address, as instructed by your system administrator.

➔ After configuring the above settings, clicking [Next] will display the Ready to Install the Program dialog box.

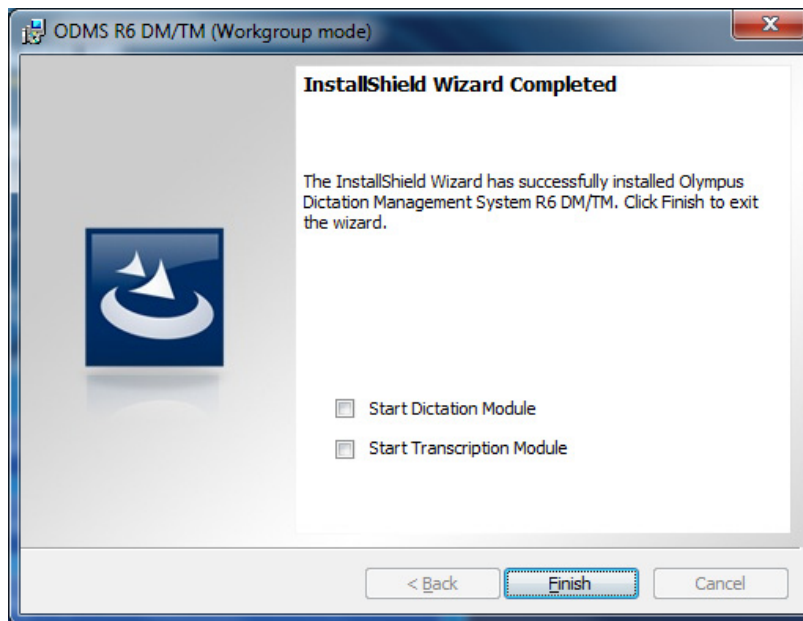


9. Check installation settings and click [Install].


→ A progress bar is displayed in a dialog box during the installation.



→ When the installation is complete, the InstallShield Wizard Completed dialog box will appear.



10. Click [Finish].

	To start the installed application when you exit the installer, select the check box on the InstallShield Wizard Completed dialog box.
---	--

4.2 Adding an Application

In cases where either the ODMS R6 Dictation Module or Transcription Module has already been installed, you can install the other one using the maintenance mode.

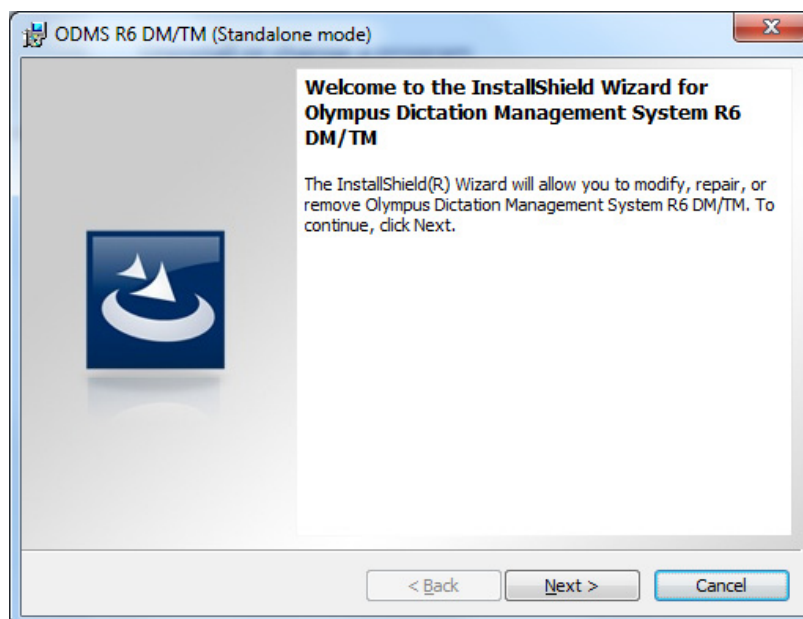


The module license keys are needed to add a module to a stand-alone system or workgroup system environment.

■ Procedure

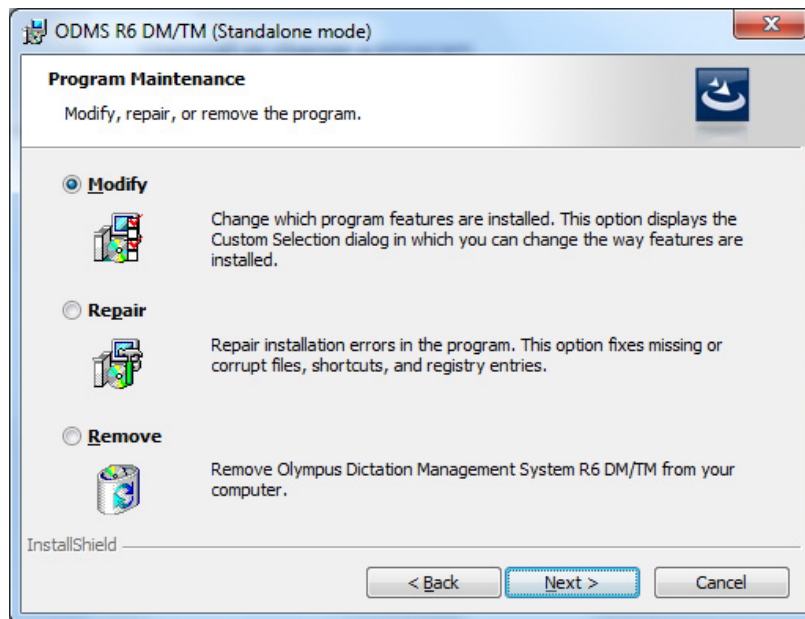
Use the following procedure to install:

1. From the Windows Start menu, select [Control Panel] – [Add/Remove Programs].
2. Select “Olympus Dictation Management System R6 DM/TM”, and then click [Modify].
3. This starts up the Olympus Dictation Management System installer in its maintenance mode.



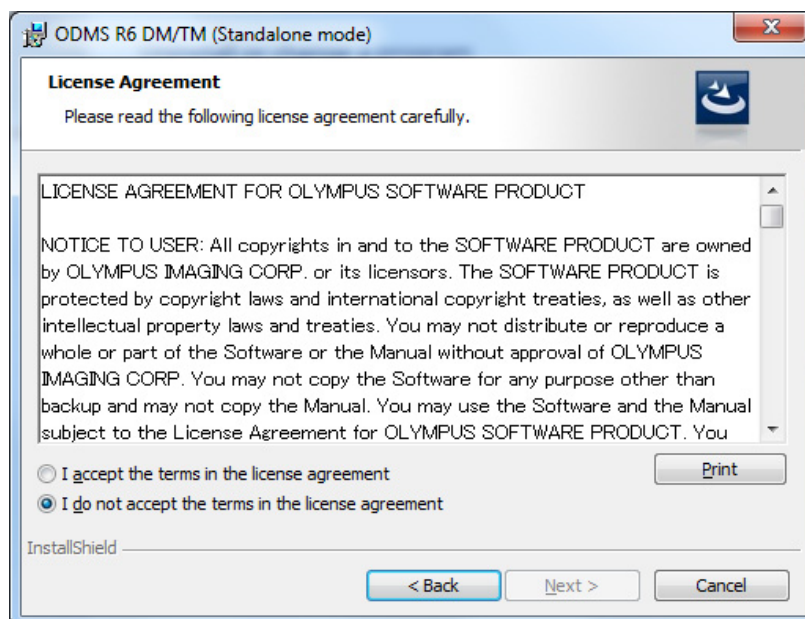
4. Click [Next].

→ The [Program Maintenance] screen will appear.



5. Select [Modify], and then click [Next].

→ The [License Agreement] screen will appear.



The remainder of this procedure is the same as that for the new installation procedure. Follow the wizard to enter the license key of the application being added and install it. For details, refer to "4.1.1 Standalone System Installation".

5 Silent Install

Silent install is an installation method in which the system administrator presets custom installation settings so installation can be performed automatically without displaying a GUI. Using this method makes it possible for users of the Dictation Module and/or the Transcription Module to install the applications without worrying about troublesome installation procedures.

The Olympus Dictation Management System supports two different distribution methods that use Windows Server Active Directory Services. One method uses the Active Directory Services group policy. The other method uses a log on script.

With these methods, the applications are automatically installed whenever the user's PC is turned on.



This chapter explains silent installation setting using a sample Dictation Module/Transcription Module installation.

5.1 Preparing Automatic Installation Package

For local installation using the CD, the system administrator must visit each PC individually and perform the installation procedure. This task can consume considerable time and resources.

Utilising Active Directory, an MSI package can be automatically distributed by the system administrator. This will perform the installation automatically.

This chapter explains the procedure for auto distribution using Active Directory functions.

	<ul style="list-style-type: none">• Automatic distribution with MSI supports .NET Framework, and the installers and update programs for the Dictation Module, Transcription Module and File Downloader. MSI packages of the other applications do not support automatic distribution.
	<ul style="list-style-type: none">• For information about structuring Active Directory and configuring its settings, please refer to Help of the OS.• When an .mst file does not exist, a program will be installed based on the MSI default setting.

5.1.1 Preparing .NET Framework

Extract .NET Framework installation package and deposit it in the <EXTRACT.> folder using the following procedure.

The .NET Framework installer is stored in the locations shown below on the ODMS R6 Clients CD. The .NET Framework can be used on both x86 and x64 platforms.

<CD_Root>\¥Dotnet¥DotNet4_0

The following subfolders are located inside the <CD_Root>\¥Dotnet folder.

Windows Imaging Component is a required component when installing .NET Framework 4.0. It is required only when installing NET Framework and must be installed manually.

Folder	Description	Remarks
DotNet4_0	Microsoft .NET Framework 4.0 Full	
WIC_x86	Windows Imaging Component (x86)	For x86 Platform
WIC_x64	Windows Imaging Component (x64)	For x64 Platform

There is a difference in preparation between distribution types.

Distributing Using a Group Policy

■ Procedure

1. Prepare a shared folder (<EXTRACT>) that can be accessed from all the PCs to which the application will be distributed.
2. At the command prompt, use the "cd" command to move to the directory where the .NET Framework installer that is the same architecture as the client is stored.
3. Execute the following commands:

```
dotNetFx40_Full_x86_x64.exe /x: <EXTRACT>
```

<EXTRACT> is the shared folder created in step 1.

➔ The installation package will be extracted into the <EXTRACT> folder.

Distributing Using a Logon Script

■ Procedure

1. Prepare a shared folder that can be accessed from all the PCs to which the application will be distributed.
2. Copy the .NET Framework 4.0 installer as-is to the folder you prepared in step 1.

5.1.2 Preparing an Installation Package

Use the following procedures to extract a Dictation Module/Transcription Module and File Downloader installation package and copy it to the <EXTRACT> folder.


■ Procedure

1. Copy the application installation package into the shared folder (<EXTRACT>) created in step 1. of procedure 5.1.1.

Each application's installation package is stored in the following folder on the ODMS R6 Clients CD.

Application name	Folder
Dictation Module Transcription Module	<CD_Root>\¥ODMS_R6
File Downloader	<CD_Root>\¥FileDownloader

2. Copy the License.dat file to the shared folder (<EXTRACT>, which is the same folder where the .msi file was extracted) you created in step 1 of procedure 5.1.1 (Only when installing the Dictation Module and/or Transcription Module).

	<p>Silent Install of File Downloader license.dat is not required to install File Downloader.</p>
---	---

3. Copy the files listed below as required to the shared folder (<EXTRACT>, which is the same folder where the .msi file was extracted) you created in step 1 of procedure 5.1.1.

The table below is a list of files used by auto distribute installation when structuring a Standalone System.

File	Description
ODMSClient.msi	This is the installation and update program of Dictation Module and Transcription Module.
FileDownloader.msi	This is the installation and update program of File Downloader.
license.dat (Standalone system option)	This is a license data file for automatically registering the license ID in an auto distribution installation. The license IDs of the licensed users can be managed in a single file. Referring to "10 Support Contacts", contact your Olympus dealer to obtain license.dat.
CustomConfig.xml (Standalone system option)	This is a file that regulates the initial default settings for Dictation Module, Transcription Module, and File Downloader. CustomConfig.xml is an option for a stand-alone system. If the application is installed using the default settings, this file is not needed. CustomConfig.xml can be used to install each application with customized application settings. For details about how to make one, see "5.1.4 Creating CustomConfig.xml".
ODMSClient.mst (Workgroup system option)	This file defines the install options of msi file. ODMSClient.mst is an option for a Workgroup System. They can be created by System Configuration Program. If the application is installed using the default settings, this file is not needed.

	<p>ODMSClient.mst can be used to install Dictation Module and Transcription Module based on customized profile settings. For how to create an MST file, refer to Help of System Configuration Program.</p> <p>The File Downloader installer does not support MST files.</p>
--	---

5.1.3 Obtaining Multi-license ID (license.dat file)

License.dat is a license file that includes the multi-license ID required to silently install the Olympus Dictation Management System software. To obtain a license.dat file, please contact your dealer or distributor when requesting a multi-license for your system.



Silent installation requires a multi-license ID

Multi-license ID can be obtained as an exchange for single licenses free of charge. Please contact your dealer or distributor for information about multi-license ID exchange procedure.

See "10 Support Contacts" for information on how to obtain multi-license key.

5.1.4 Creating CustomConfig.xml (Optional)

CustomConfig.xml is a preset configuration file used to customize application settings on initial startup after installation. When this file is installed along with Dictation Module and/or Transcription Module, the CustomConfig.xml settings will be copied to the application user or PC Name xml profile settings.



The CustomConfig.xml file is used in a standalone system and not in a workgroup system.

How to create a CustomConfig.xml profile is described below.

Creating a CustomConfig.xml File for Dictation Module/Transcription Module

■ Procedure

1. Use an installed Dictation Module and/or Transcription Module to pre-configure Dictation Module/Transcription Module option settings.
Please refer to Help of Dictation Module or Transcription Module.
2. Copy the following xml files for user profiles to an arbitrary folder.
 - In the case of Individual User Settings:
%AppData%\Olympus\ODMSR6\DMTM\{User ID}.xml
 - In the case of All User Settings:
%ALLUSERSPROFILE%\Application Data\Olympus\ODMSR6\DMTM\{Computer Name}.xml
3. Rename the file ({User ID}.xml) or {Computer Name}.xml) to "CustomConfig.xml".
4. Copy the renamed CustomConfig.xml file to the shared folder (<EXTRACT>, which is the same folder where the .msi file is stored) created in step 1 of procedure 5.1.1.

Creating a CustomConfig.xml File for File Downloader

■ Procedure

1. Use the installed File Downloader to pre-configure File Downloader option settings.
Refer to File Downloader Help.
2. Copy the following xml files for user profiles to an arbitrary folder.
%AppData%\Olympus\File Downloader \Config.xml
3. Rename the xml file to "CustomConfig.xml".

- 4.** Copy the renamed CustomConfig.xml file to the shared folder (<EXTRACT>, which is the same folder where the .msi file is stored) created in step 1 of procedure 5.1.1.

Please install applications by following the procedures of automatic distribution by group policy, or by using a log-on script.

5.2 Application Deployment via Group Policy

Using Windows Server 2008 as a model, this section explains the procedures for registering automatically distributed applications using group policy. You can use the same procedure to configure installation settings for Dictation Module, Transcription Module, and File Downloader.

First configure .NET Framework (4.0 or higher), and then install the Dictation Module and other applications.

5.2.1 Register Organization Unit for Application Deployment

Register the organization by following the procedures below:

■ Procedure

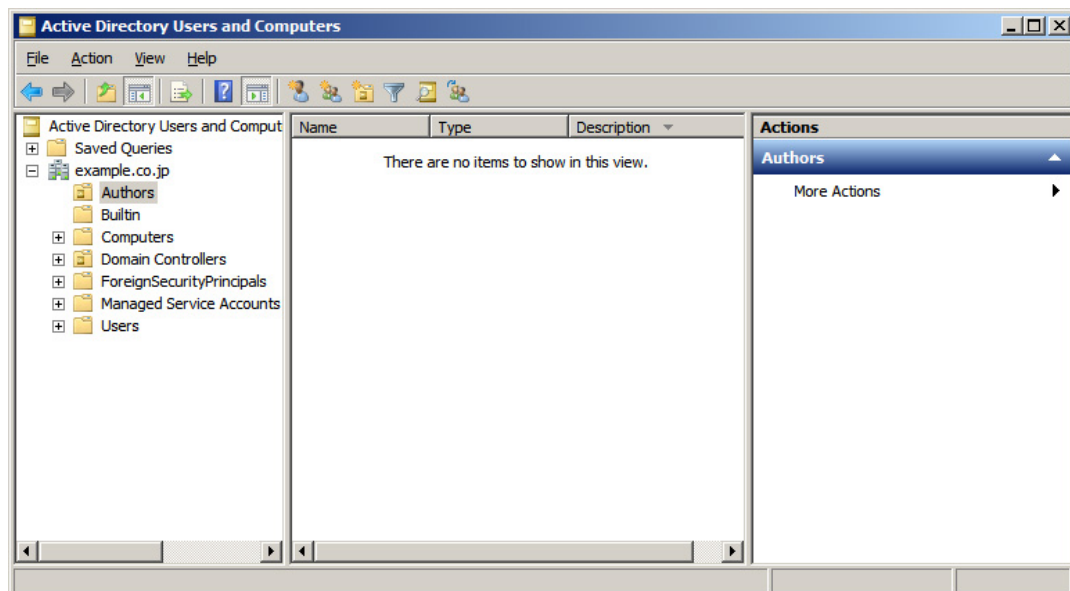
1. From the Windows Start menu on the server, select [All Programs] – [Administrative Tools] – [Active Directory Users and Computers].

➔ An Active Directory Users and Computers dialog box will appear.

2. Create a new organization (OU).

Select a Domain name in the tree view, then right-click.

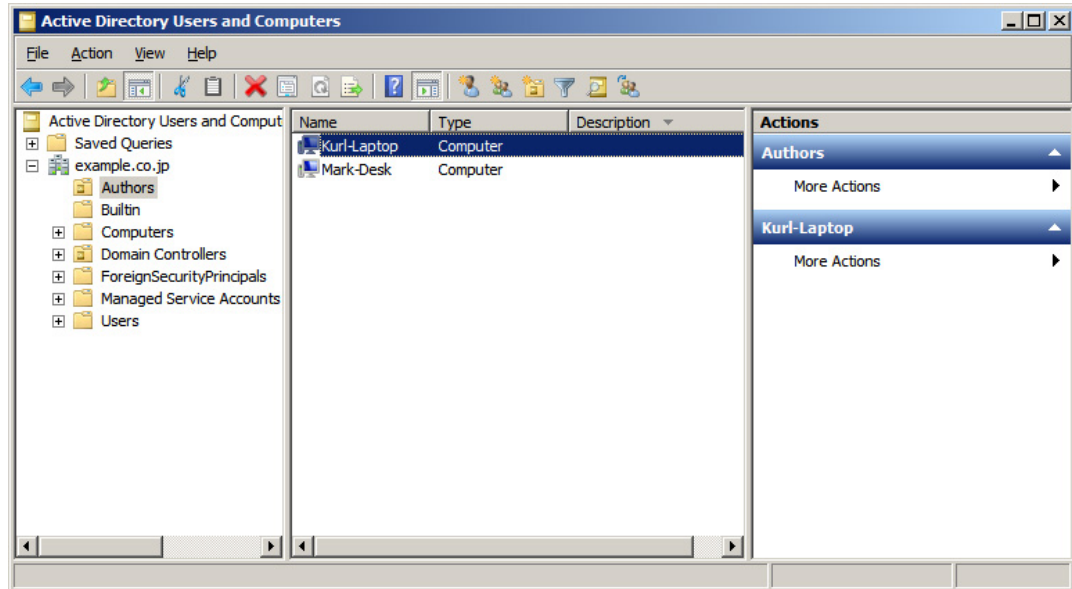
Select [New] – [Organizational Unit] from the menu, enter the organization name (ex., "Authors") then click [OK].



3. Register the desired computer to the organization (OU).

Select the newly created organization (“Authors”), then select [New] – [Computer] on the context menu.

Follow the wizard to register computers to which the application is to be distributed. The figure below shows registration of two PCs: Kurl-Laptop and Mark-Desk.

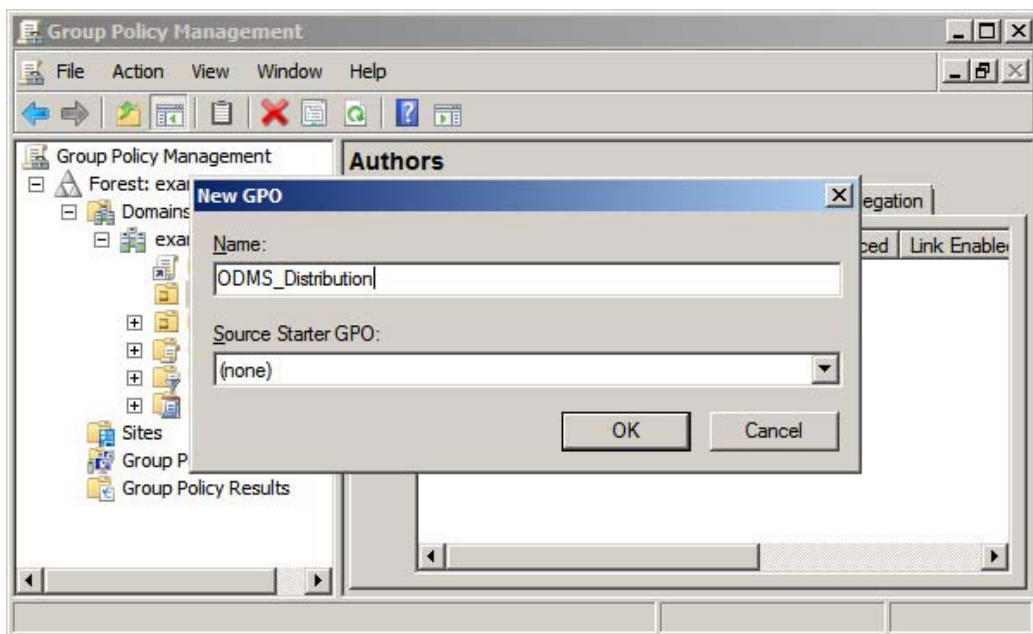


If the computer is already managed by Active Directory, select “Computers” in the tree view, then select the PC from the list to which the application is to be distributed. On the context menu of the PC, select [Move], and then move the PC to the newly created organization.

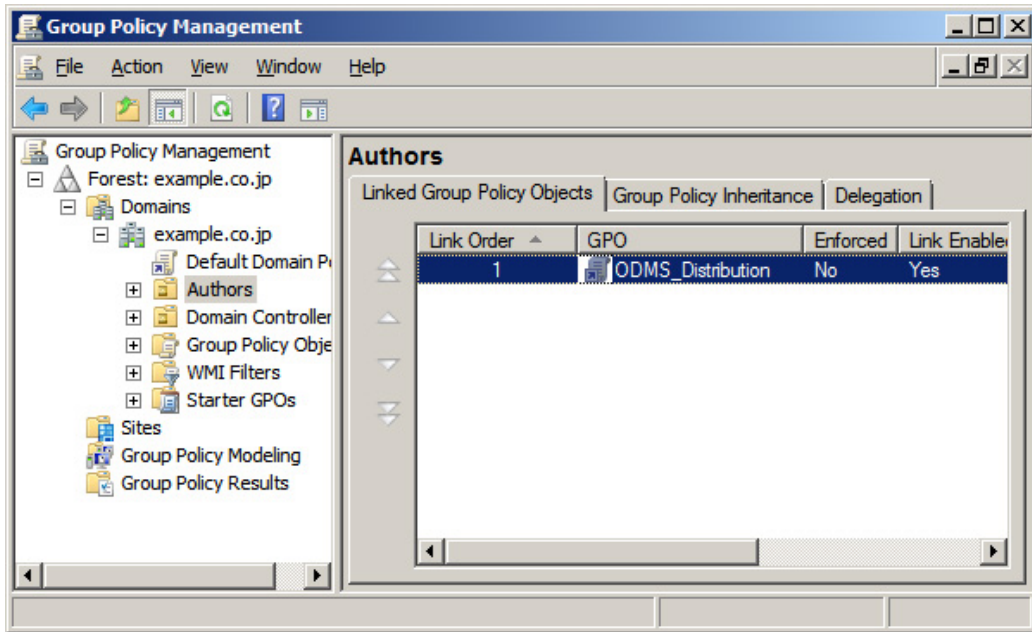
5.2.2 Register Group Policy

■ Procedure

1. From the Windows Start menu on the server, select [All Programs] – [Administrative Tools] and then “Group Policy Management”.
→ This starts up Group Policy Management.
2. Select the group name (Authors) you created in section 5.2.1, and then click [Create a GPO in this domain, and Link it here] on the shortcut menu.
→ The New GPO dialog box will appear.
3. In the [Name] box, type in a group policy name, and then click the [OK] button.



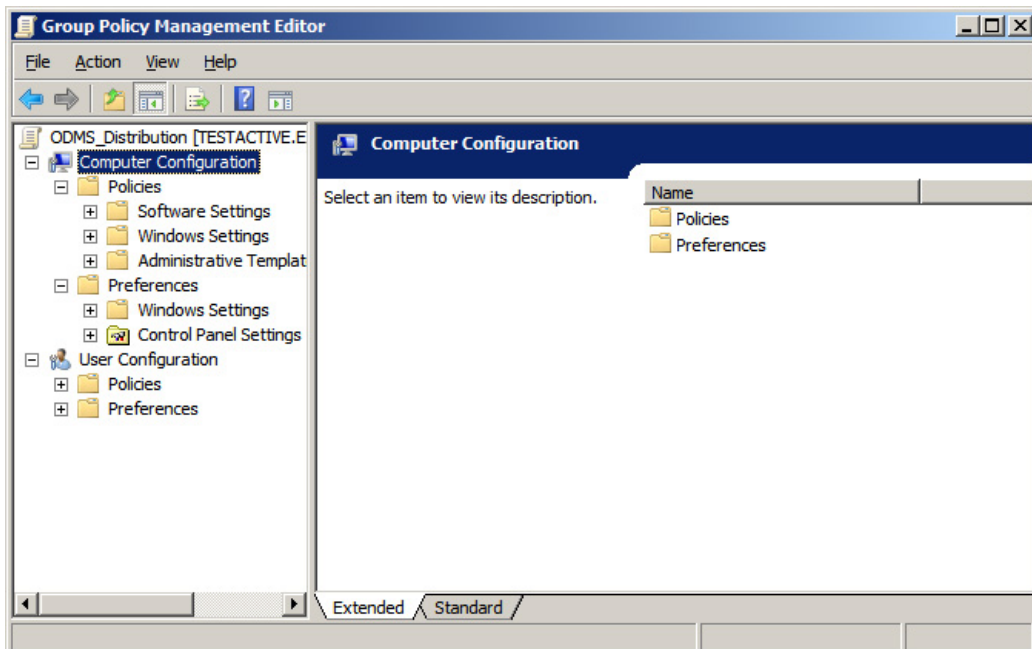
4. Return to the Group Policy Management screen, and then select the group name (Authors) you added in section 5.2.1. In the right pane, check that the group policy you added in step 3 has been added to the list.




5. First, configure the distribution settings for Microsoft .NET Framework (4.0 or higher).

Locate the .NET Framework msi in a shared folder that can be referenced by the user being installed. Next, right-click the policy name added in step 3, and then select Edit on the shortcut menu.

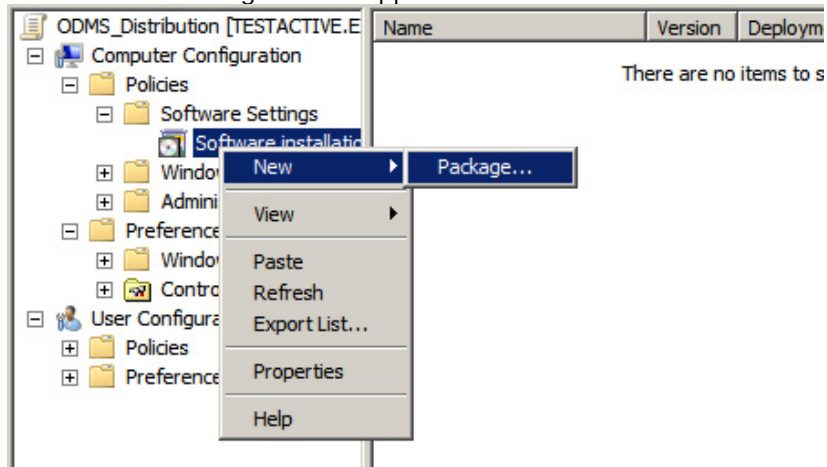
➔ This starts up the Group Policy Management Editor.



 Install .NET Framework (4.0 or higher) before installing public applications.

- Click [Computer Configuration] - [Policies] and then right-click [Software Settings]. On the context menu, click [New] - [Package].

→ The Select File dialog box will appear.

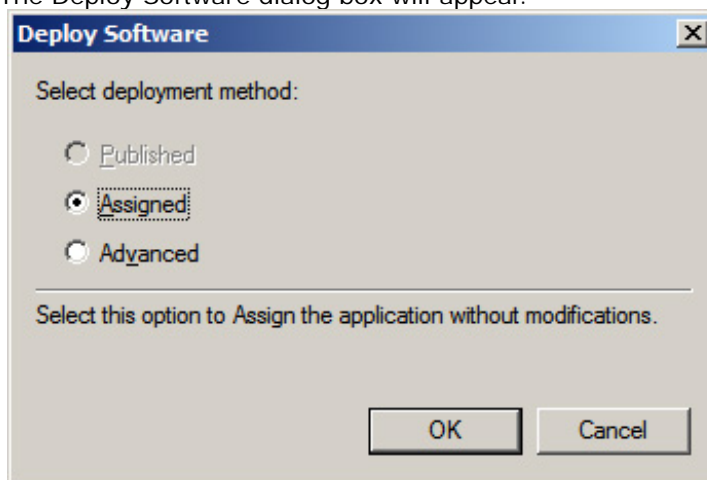


- Select the MSI file of the published update program, and then click [Open].

Specify the appropriate MSI file depending on the System Type of the PC environment.

Platform	Required MSI files
x86	netfx_Core_x86.msi netfx_Extended_x86.msi
x64	netfx_Core_x64.msi netfx_Extended_x64.msi

→ The Deploy Software dialog box will appear.



- Select [Assigned], and then click [OK].

→ The procedure to register .NET Framework MSI files on the group policy's published application list is finished at this point. Next, the Dictation Module/Transcription Module MSI files are registered.

- Locate the MSI files of the Dictation Module and the other application being published in a location that can be accessed from the PC being published to. After that, perform steps 6 and 7 to specify the MSI files to be published.



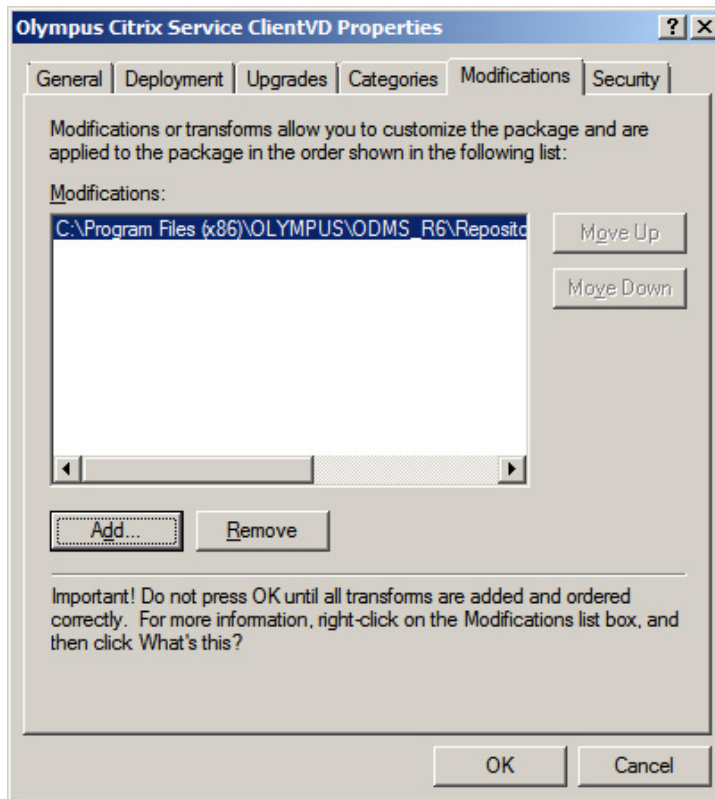
The path to msi/exe should be specified as a network path. For example, if msi is stored in the shared folder "ODMS" of the server PC (¥¥OLY1), specify as "¥¥OLY1¥ODMS¥...¥ODMSClient.msi." When msi is stored on the local disk on the server and the specified path is something like "C:¥...¥ODMSClient.msi", installation may fail.

10. You can specify MST files as required.

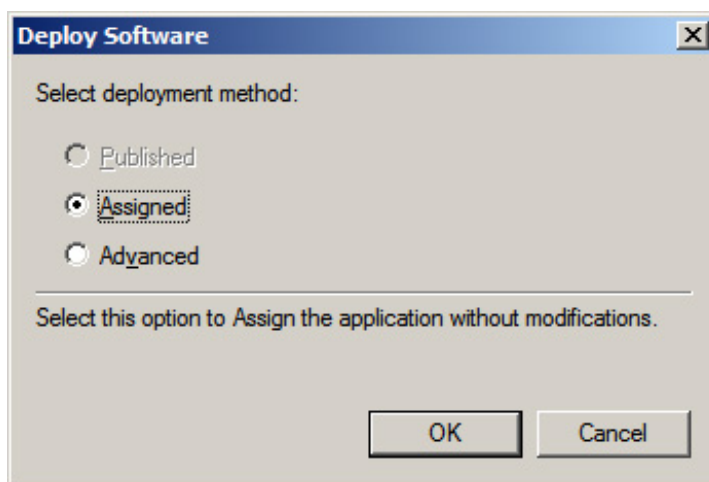
If you want to install a workgroup system with MST, select [Advanced] in the Deploy Software dialog box.

The Property dialog box will appear.

Select the Modifications tab, then click [Add] and specify an MST file in which the install settings are saved.



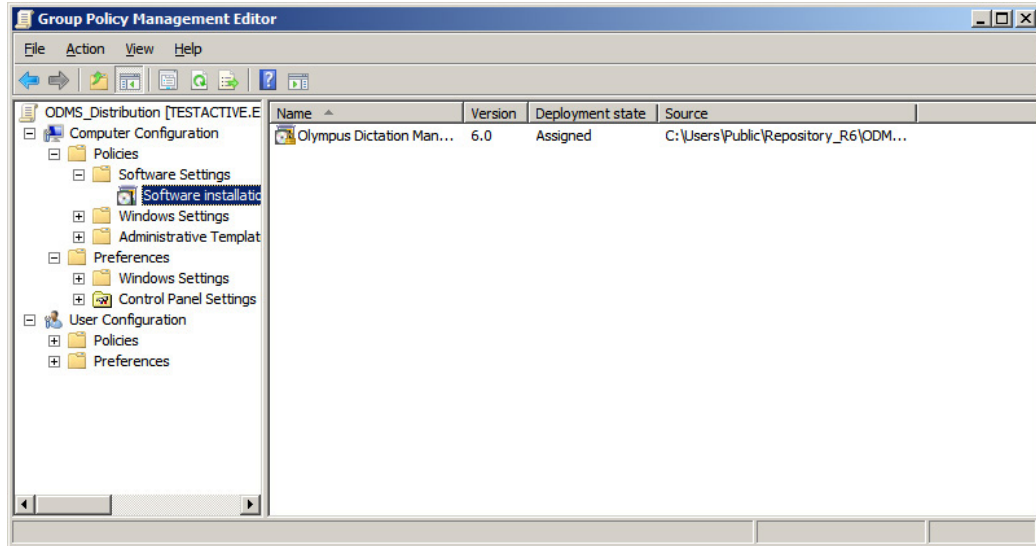
In cases other than those described above, select [Assigned] in the Deploy Software dialog box.





- MST files that correspond to the MSI of the Dictation Module and Transcription Module can be created with the System Configuration Program on the ODMS R6 Administrators CD.
- MST files that correspond to the MSI of File Downloader cannot be created.

11. Click [OK].



An MST file cannot be added or deleted anywhere other than in the Property dialog box described here. If you forget to register the files, delete the group policy created in step 3, and try again by performing the steps of this procedure.

12. This completes file registration.

Files are registered. First .NET Framework and then Dictation Module/Transcription Module will be installed automatically to the specified client PCs on the next boot-up based on the group policy settings.



Which applications will be installed to the client PC depends on the license ID registered in LICENSE.DAT. If you want Dictation Module and Transcription Module to run on different client PCs, make two copies of the installer in "5.1 Preparing Automatic Installation Package", and then copy LICENSE.DAT for each application to the corresponding folders. Create a special organization for distributing each installer (ex. "Author"/"Transcriptionist"), then configure each organization by following the procedures described in this section.

5.3 Application Deployment via Log-on Script

This section describes the procedures to register applications automatically by using log-on script.

■ Procedure

1. Prepare the installation package for automatic distribution.

Extract the installation package for distribution as described under “5.1 Preparing Automatic Installation Package”.

2. Prepare the script file.

If a log-on script file exists, open it with an editor (Notepad, etc.) and add commands for installation.

If a log-on script file does not exist, create a new bat file (.bat) for log-on script in the shared folder (“NETLOGON”) of the domain server, then add commands for installation.

Specify commands for installation as follows:

```
msiexec *****msi /q OPTION1=1 OPTION2=2 etc...
```

■ When installing with .NET Framework in a stand-alone system silently

```
%%ShareServer%ODMS%.dotNetFx40_Full_x86_x64.exe /q  
msiexec /i %%ShareServer%ODMS%.ODMSClient.msi /qn
```



■ When installing with .NET Framework in a workgroup system silently

```
%%ShareServer%ODMS%.dotNetFx40_Full_x86_x64.exe /q  
msiexec /i %%ShareServer%ODMS%.ODMSClient.msi SYSTEM=WORKGROUP /qn
```

■ When upgrading an installed Dictation Module

For minor upgrade, “REINSTALL” and “REINSTALLMODE” parameters are needed.

```
msiexec /i %%ShareServer%ODMS%.ODMSClient.msi REINSTALLMODE=vomus  
REINSTALL=ALL
```

	<ul style="list-style-type: none">• Specify a .NET Framework installation command prior to a Dictation Module/Transcription Module installation command. This command is not required when .NET Framework (4.0 or higher) is already installed.• The path to msi/exe should be specified as a network path. For example, if msi is stored in the shared folder “ODMS” of the server PC (%%OLY1), specify as “%%OLY1%ODMS%.ODMSClient.msi.” When msi is stored on the local disk on the server and the specified path is something like “C:%.ODMSClient.msi”, installation may fail.
	<p>Command option settings</p> <p>For details about command options, refer to “8.1 How to Use Installation Options”. The standard command options of MSI can be used.</p>

3. From the Windows Start menu of the server, select [All Programs] – [Administrative Tools] – [Active Directory Users and Computers].

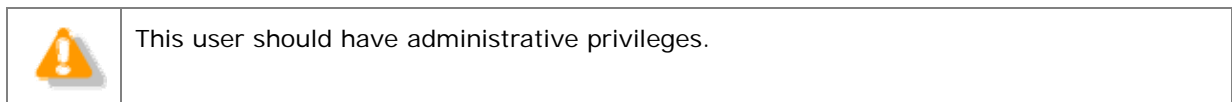
➔ The [Active Directory Users and Computers] dialog box will appear.

4. Open User Properties.

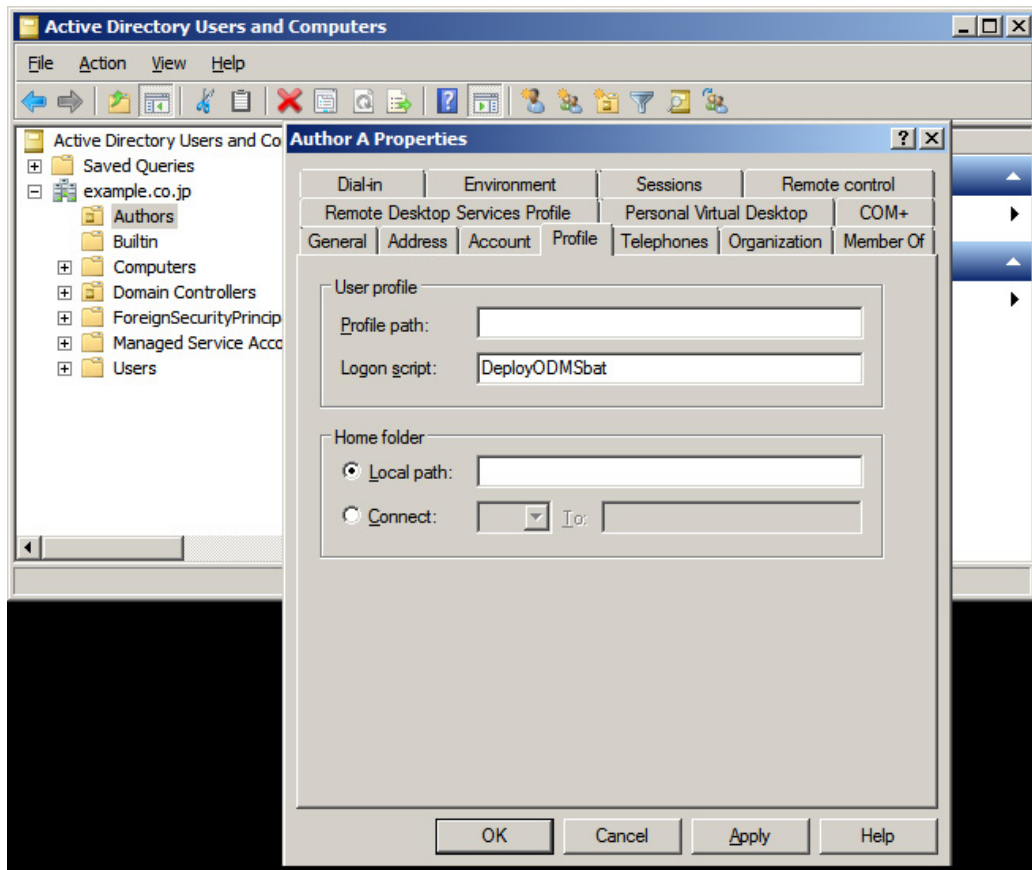
Select the “Users” folder in the tree view, and then select a user or a user group from the list to which the application is to be distributed.

Select [Properties] on the context menu.

→ The user Properties dialog box will appear.



5. Select the Profile tab, and then enter the batch file name, defined in step 2, into "Logon script."



6. Files are registered.

.NET Framework and then Dictation Module/Transcription Module will be installed automatically to users specified here at the next log-on.

6 Upgrading Installation

This chapter explains how to upgrade the Dictation Module/Transcription Module of DSS Player Pro R5 (R5), or DSS Player Pro R4 (R4) installed on a PC to the new version Dictation Module/Transcription Module of Olympus Dictation Management System R6 (ODMS R6).

■ Overview

● System Configuration after Upgrade

When upgrading, the ODMS R6 Dictation Module/Transcription Module are installed with the same installation settings as R5/R4.

If R5 was installed as a standalone system, for example, ODMS R6 will also be installed as a standalone system. If R5 was installed as a workgroup system, ODMS R6 will also be installed as a workgroup system.

R4 does not have a workgroup system configuration, so it is installed as a standalone system.

● Changing the System Configuration

The system configuration cannot be changed when upgrading.

For example, to upgrade R5 installed as a standalone system to an ODMS R6 workgroup system or R5 installed as a workgroup system to an ODMS R6 standalone system, first uninstall R5 and then perform a new install for ODMS R6.

● License ID

An ODMS R6 license ID is required to upgrade.

The applications that are installed are in accordance with the ODMS R6 license ID that is specified when installing.

For example, with a license ID for the ODMS R6 Transcription Module to upgrade a PC with the R5 Dictation Module installed will install the ODMS R6 Transcription Module only. The R5 Dictation Module will be uninstalled at this time.

6.1 Upgrade from DSS Player Pro R5/R4 Standalone System

This chapter explains the procedure for upgrading a PC with R4 or R5 installed as a standalone system to ODMS R6.

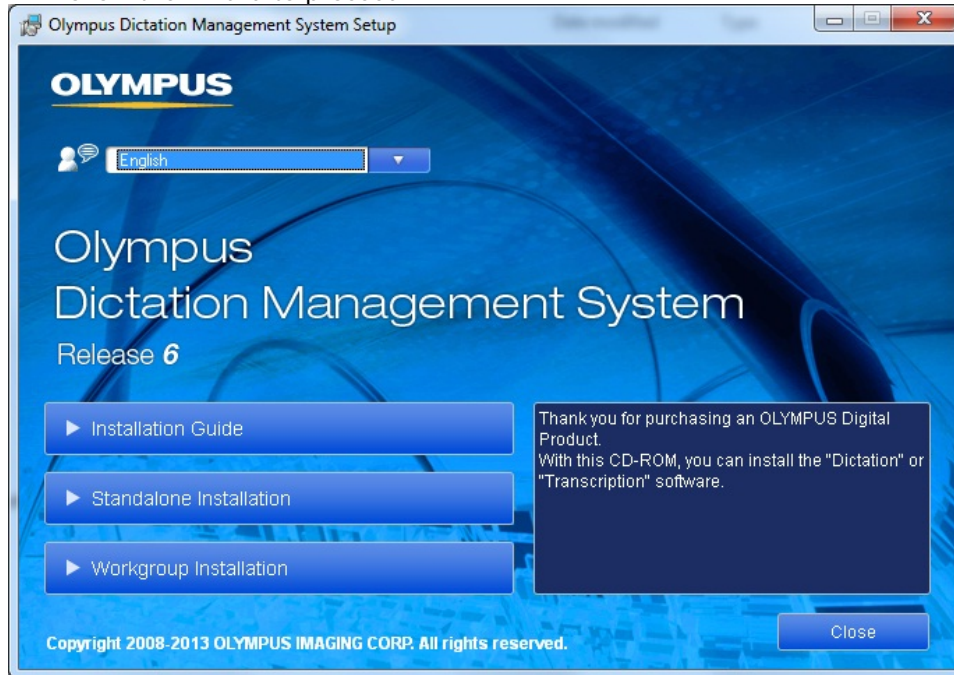
6.1.1 Upgrading Using a CD

■ Procedure

Use the following procedure to upgrade to Olympus Dictation Management System R6 (ODMS R6):

1. Insert the ODMS R6 Clients CD, which will automatically start a launcher.

➔ Follow the wizard to proceed.

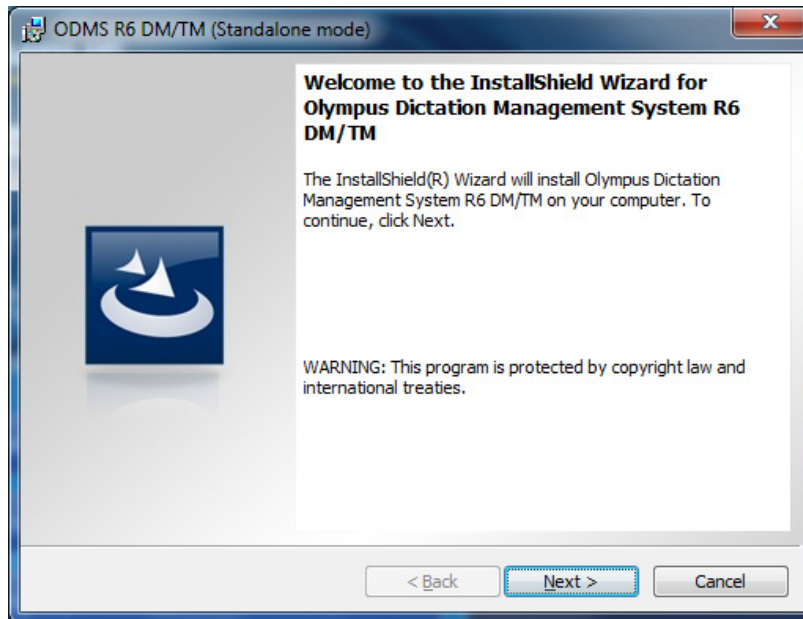


Starting the Launcher

If the launcher window does not appear after inserting the CD, select [Computer] from Windows [Start] menu, click the CD-ROM icon, then double-click "launcher.exe".

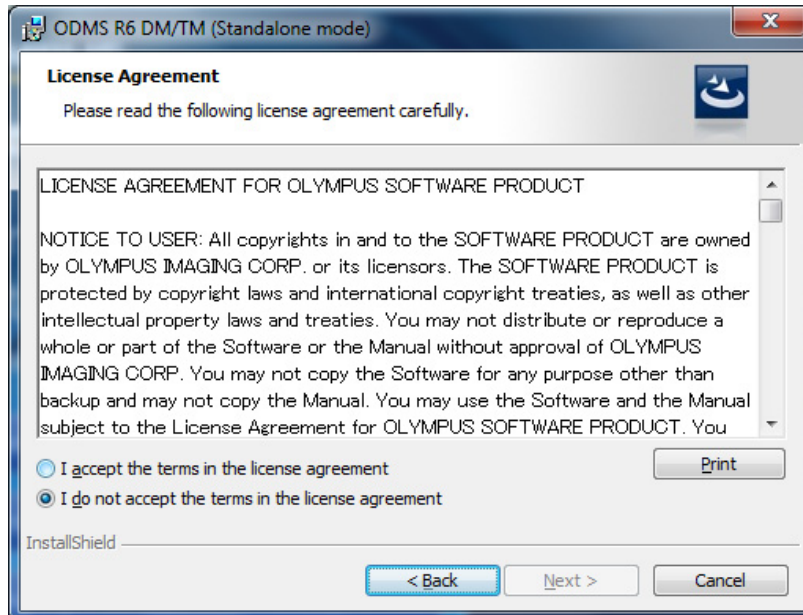
2. In the launcher window, click [Standalone Installation].

➔ After the upgrade installation confirmation message appears, the installer program will start up automatically and a welcome dialog box will appear.



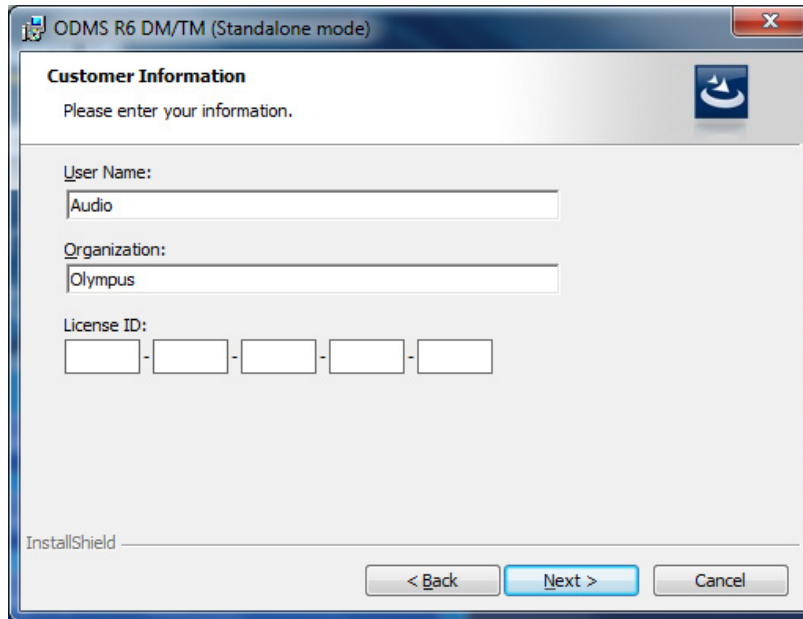
3. Click [Next].

➔ The License Agreement dialog box will appear.



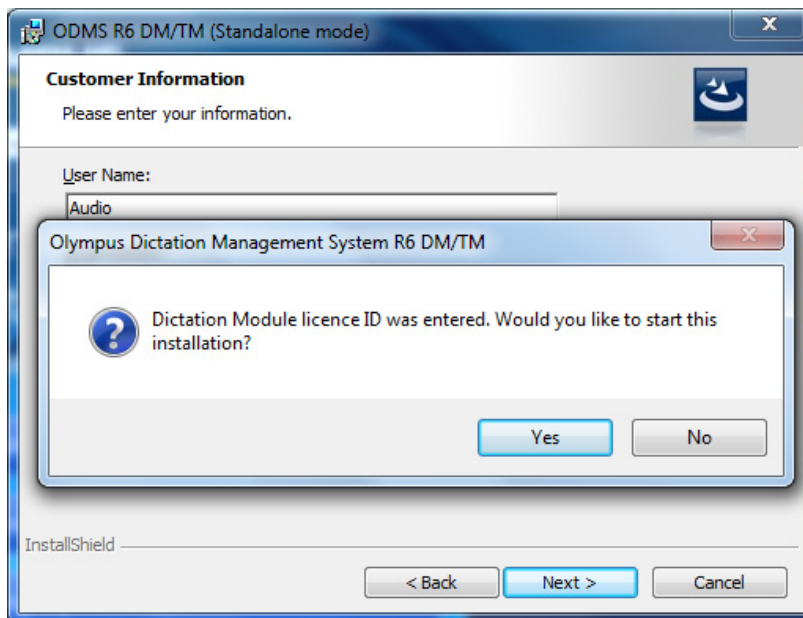
4. Accept the license agreement, and then click [Next].

➔ The Customer Information dialog box will appear.



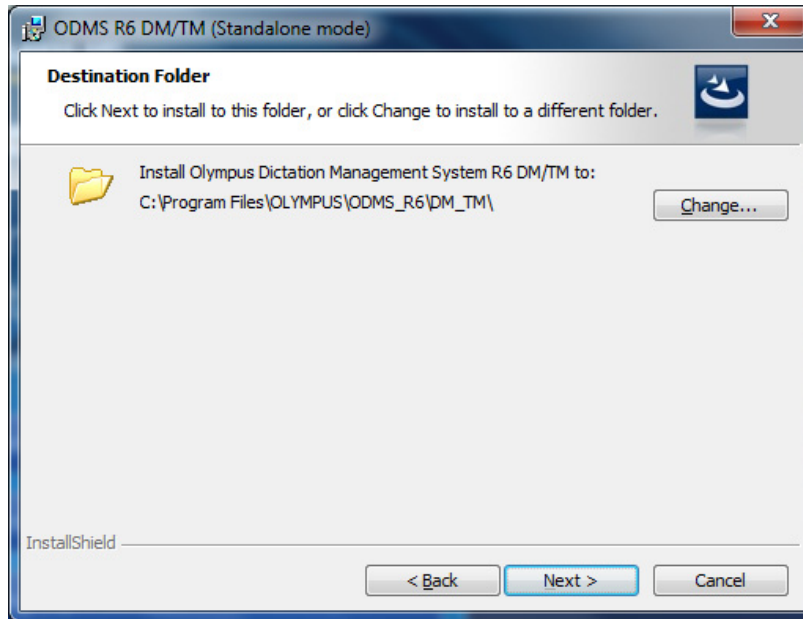
5. Enter a user name, a company name, and a license ID for a standalone system, and then click [Next].


➔ A message confirming the application to be installed will appear.



6. Check that the correct application name is displayed, and then click [Yes].

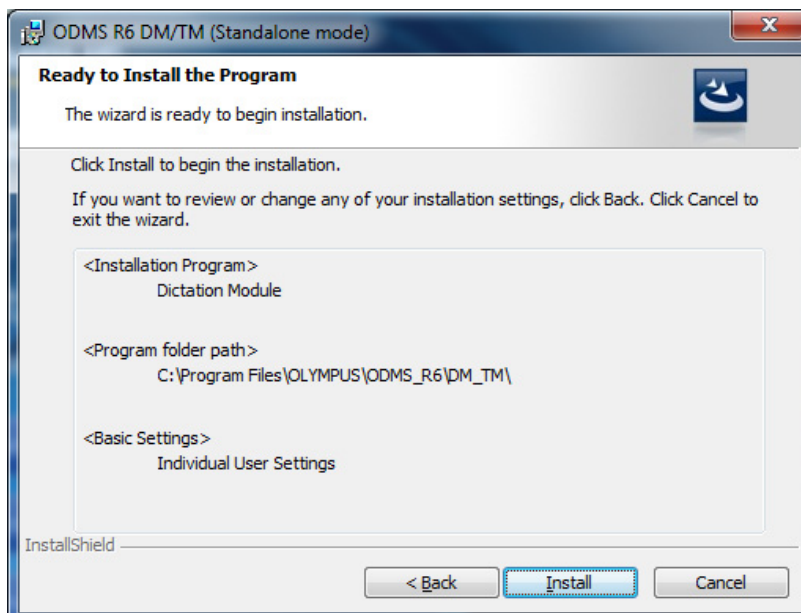
➔ The Destination Folder setting dialog box will appear.



 The user profile management method (<Basic Settings>) automatically causes the settings to be inherited when upgrading from R5. You can select from Individual or All Users in Basic Settings when upgrading from R4.

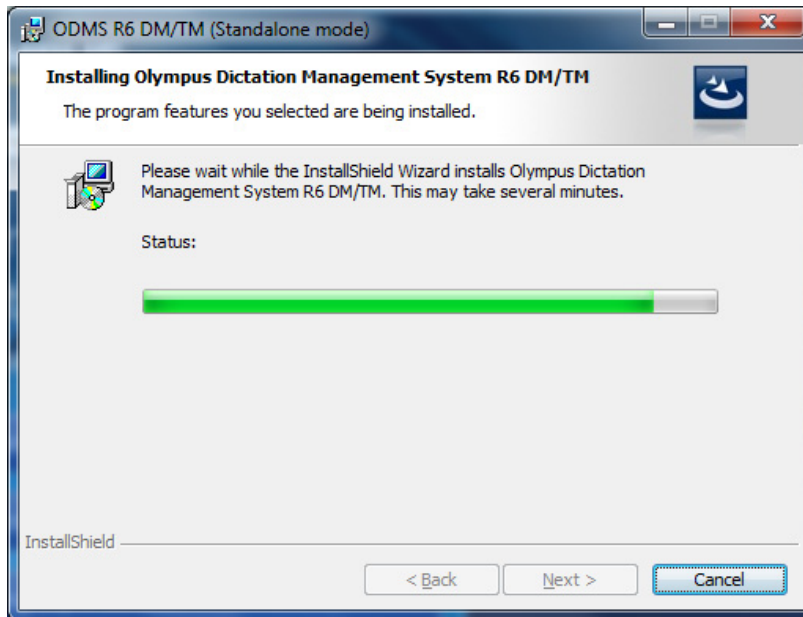
7. Specify a program folder for installation, and then click [Next].

➔ The Ready to Install the Program dialog box will appear.

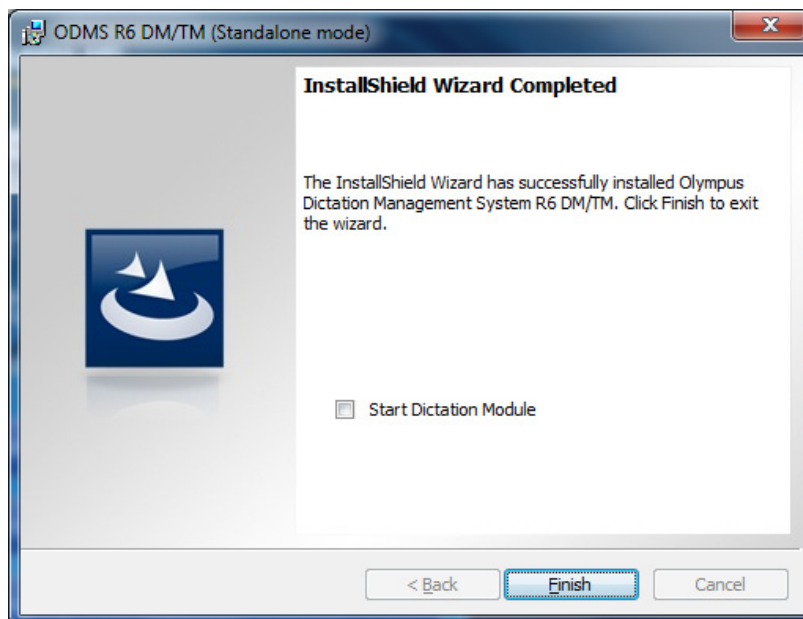


8. Check installation information.

A progress bar is displayed in a dialog box during the installation.



When the installation is complete, the InstallShield Wizard Completed dialog box will appear.



9. Click [Finish].

	To start the installed application when you exit the installer, select the check box on the InstallShield Wizard Completed dialog box.
	To restore DSS Player Pro R4 or R5 after upgrading to ODMS R6, uninstall ODMS R6, and then reinstall DSS Player Pro R4 or R5.

6.1.2 Upgrading with Silent Install

The LICENSE.DAT file is required for silent install upgrade from R4 or R5 to Olympus Dictation Management System R6 (ODMS R6). For details, refer to “5.1.3 Obtaining Multi-license ID (license.dat file)”.

■Using Active Directory:

In a domain environment where Active Directory is available, silent installation is possible. For detailed information on deploying Olympus Dictation Management System via Group Policy, please check section “[5.2 Application Deployment via Group Policy](#)” in this Installation Guide.

■Using Logon Script:

Installation procedure for silent installation using logon script.

1. Obtain Multi-license ID(LICENSE.DAT)

See section “5.1.3 Obtaining Multi-license ID (license.dat file)”

2. Prepare installation package

Copy the folders below of ODMS R6 Clients CD to a shared folder accessible by all the target installation PCs.

<CDRoot>\¥ODMS_R6

Copy LICENSE.DAT file provided to the ODMS_R6 folder noted in step 1. Confirm that ODMSClient.msi and LICENSE.DAT are stored in the same folder.

3. Prepare batch file for logon script

The details of command switches that can be used in the batch file are described in section “[8.1 How to Use Installation Options](#)”.

4. Modify logon script of the target users

See section “[5.3 Application Deployment via Log-on Script](#)”.
Installation setup on the server is complete.

5. Log in to domain with user account that uses the logon script registered in step 4.

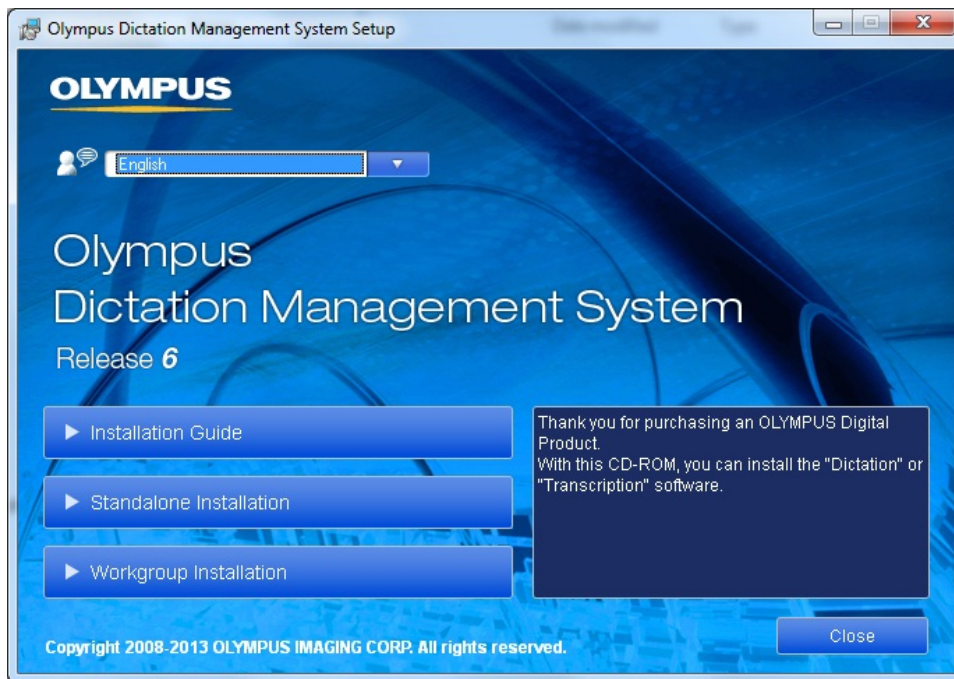
When logging on from a client PC, logon script is read and the installation is performed automatically.

6.2 Upgrade from DSS Player Pro R5 Workgroup System

This chapter explains the procedure for upgrading a PC with R5 installed as a workgroup system to ODMS R6.

■ Procedure

1. Insert the ODMS R6 Clients CD, which will automatically start a launcher.

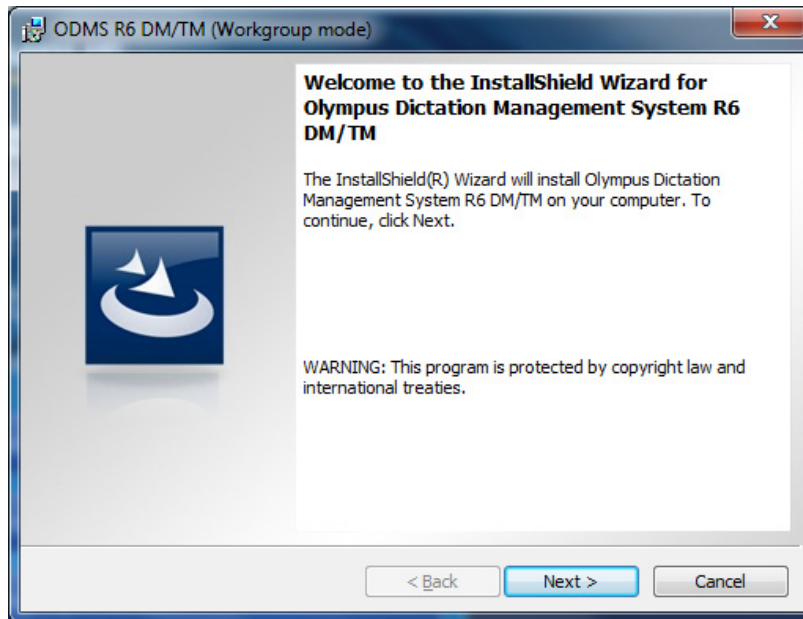


Starting the Launcher

If the launcher window does not appear after inserting the CD, select [Computer] from Windows [Start] menu, click the CD-ROM icon, then double-click "launcher.exe".

2. In the launcher window, click [Workgroup Installation].

➔ The installation program will automatically start, and a welcome dialog box will appear.



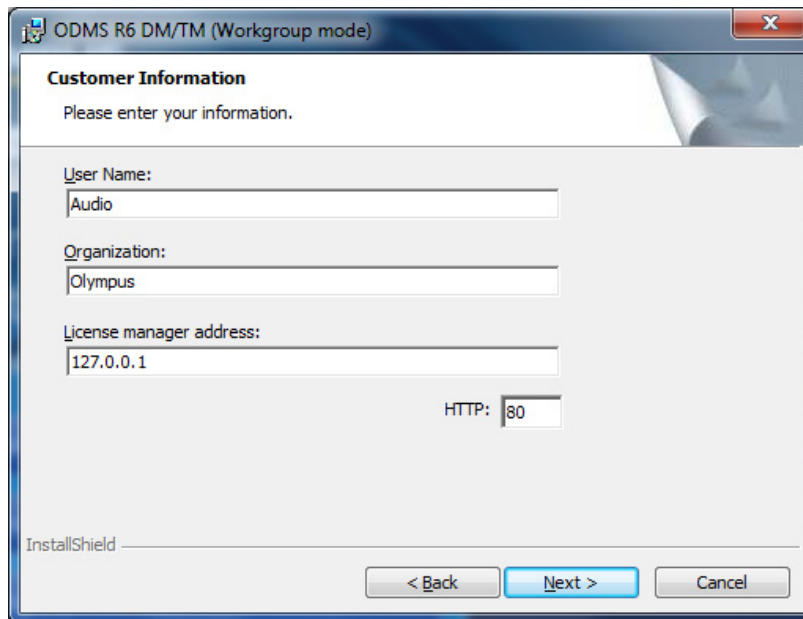
3. Click [Next].

➔ The License Agreement dialog box will appear.



4. Accept the license agreement, and then click [Next].

→ The Customer Information dialog box will appear.



ODMS R6 DM/TM (Workgroup mode)

Customer Information
Please enter your information.

User Name: Audio

Organization: Olympus

License manager address: 127.0.0.1

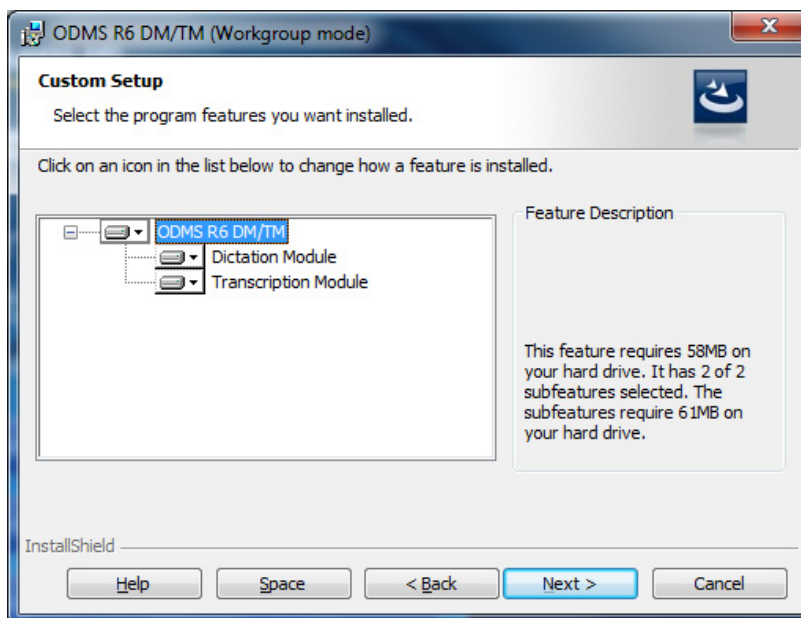
HTTP: 80

InstallShield

< Back Next > Cancel

5. Enter a user name, a company name, and license manager information as required, and then click [Next].

→ The Custom Setup dialog box will appear.



ODMS R6 DM/TM (Workgroup mode)

Custom Setup
Select the program features you want installed.

Click on an icon in the list below to change how a feature is installed.

ODMS R6 DM/TM

- Dictation Module
- Transcription Module

Feature Description

This feature requires 58MB on your hard drive. It has 2 of 2 subfeatures selected. The subfeatures require 61MB on your hard drive.

InstallShield

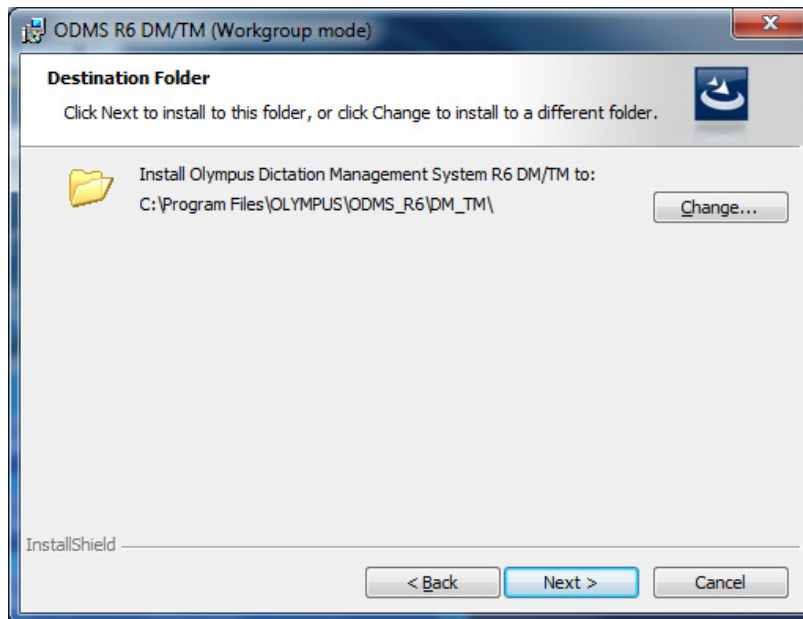
Help Space < Back Next > Cancel



- Clicking [Next] on the Customer Information dialog box will confirm access to the specified License Manager. An error message will appear if access to License Manager cannot be confirmed because License Manager is not yet set up or due to some other reason. However, installation of Dictation Module/Transcription module will be able to proceed.
- After installation, the setting screen of each application can be used to change the License Manager address and port number settings.

6. Select the application to be installed, and then click [Next].

➔ The Destination Folder setting dialog box will appear.



7. Specify a program folder for installation, and then click [Next].

➔ Depending on the R5 Basic Settings, the dialog box shown below may appear.

■ **[Local]**

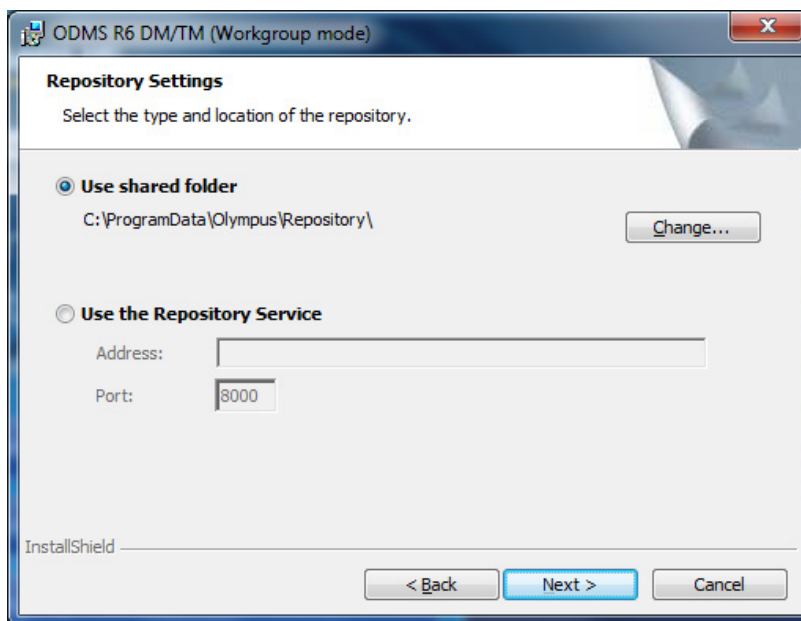
If R5 settings were being managed by the local PC (System Configuration Program was not used), ODMS R6 also will be managed by the local PC following upgrade. The “Individual User Settings” or “All User Settings” option setting inherited from the R5 configuration.

➔ In this case, the Ready to Install the Program dialog box will appear without displaying the Basic Settings setting dialog box.

■ **[Workgroup]**

If R5 settings were being managed by repository (System Configuration Program was used), ODMS R6 also will be managed by repository following upgrade.

➔ In this case, the Repository Settings dialog box will appear.

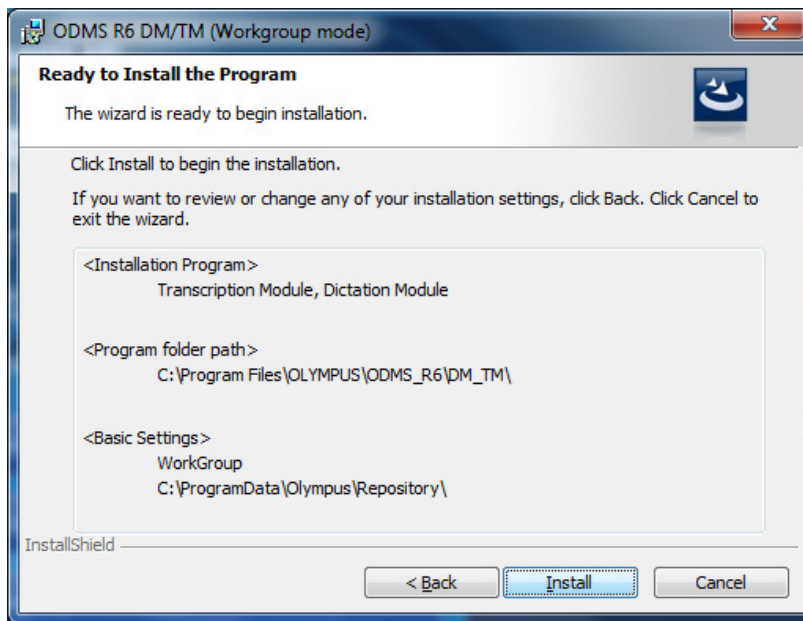


- If “Use shared folder” was selected, setting will be configured to use a shared folder type repository. Click [Change...] and then use the Select Folder dialog box that appears to specify the shared folder as instructed by your system administrator.

	The repository folder must be a shared folder that can be accessed by the client PC.
	When using a shared folder type repository different folders must be used for the shared folders used by the DSS Player Pro R5 and ODMS R6 applications. Prepare one exclusive folder for DSS Player Pro R5 and one more exclusive folder for ODMS R6. When you install ODMS R6, you must specify an ODMS R6-exclusive shared folder.

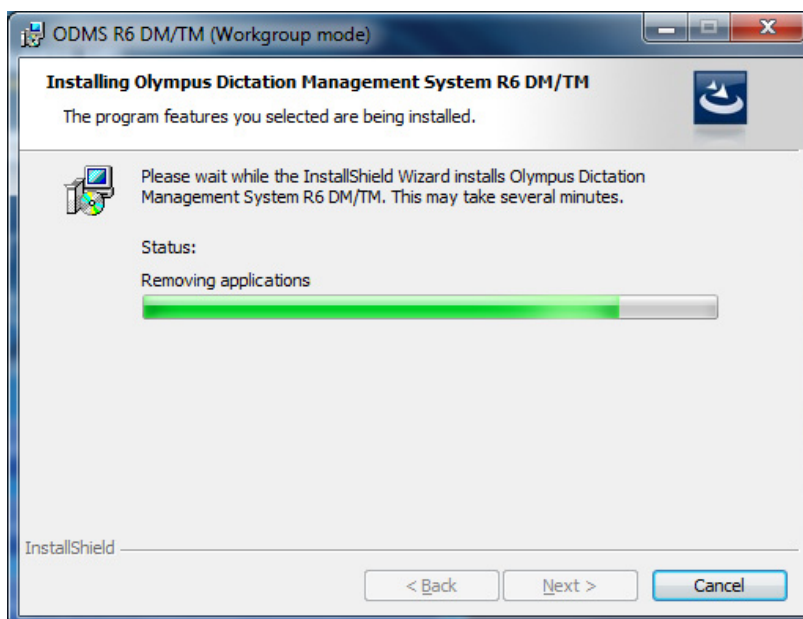
- Selecting “Use the Repository Service” specifies access to the repository via a Windows service program. For this option, specify the address and port number of the server running the repository address, as instructed by your system administrator.

➔ After configuring the above settings, clicking [Next] will display the Ready to Install the Program dialog box.

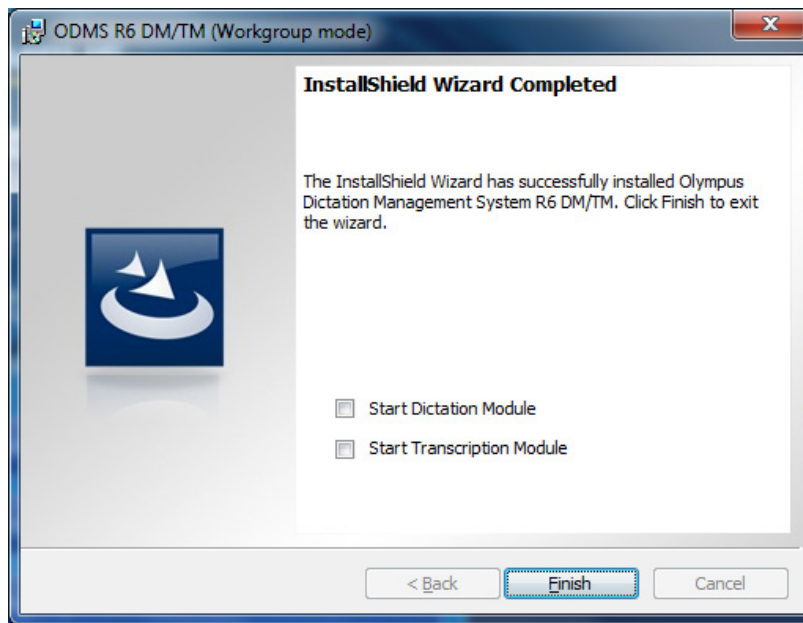


8. Check the installation information, and then click [Install].

→ A progress bar is displayed in a dialog box during the installation.



→ When the installation is complete, the InstallShield Wizard Completed dialog box will appear.



9. Click [Finish].



To start the installed application when you exit the installer, select the check box on the InstallShield Wizard Completed dialog box.

6.3 Update Olympus Dictation Management System R6 to Later version

Olympus Dictation Management System R6 (ODMS R6) is updated to add new functions. This chapter explains how to update ODMS R6.

6.3.1 Auto Update from the Olympus Update Server

ODMS R6 update programs are published by the Olympus update server. When the auto update setting of the Dictation Module/Transcription Module is turned on, the Dictation Module/Transcription Module will periodically check the Olympus update server, and automatically download and update as required whenever a newly published update program is available.

For information about how to configure auto update settings, refer to Dictation Module/Transcription Module Help.

6.3.2 Simple Update under the Same Type of Installation

If your system administrator is managing update programs, update your installation as described in this section. In this case, turn off the auto update setting.

To perform a basic software version update for ODMS R6 (StandAlone/WorkGroup), the same method of installation procedure is recommended as the installation method originally used to install the software. i.e., installing the application originally from the ODMS R6 Clients CD, and then attempting to do a version update using Active Directory would be unsuccessful.

■ R6 Silent Installation via Active Directory

In the environment where Windows Servers domain controller is used, silent installation via Active Directory is possible. For detailed information on deploying R6 software via Group Policy, please check "[5.2 Application Deployment via Group Policy](#)".

Installation procedure of silent installation via logon script is described below.

1. Prepare installation package

Copy the following folders of ODMS R6 Clients CD to a shared folder on the network that can be viewed from all target workstations.

<CDRoot>\%ODMS_R6

- **The shared folder must be accessible from the client PCs.**

2. Prepare batch file for logon script according to Installation Guide

In performing ODMS version update, (i.e. from R6.0 to R6.XX), "REINSTALL"/ "REINSTALLMODE" are necessary parameter to use. Following is the example of specifying command. All configurations for the system will be migrated.

```
msiexec /i "%OLY1%\%ODMS_R6%\ODMSClient.msi" REINSTALL=ALL REINSTALLMODE=vomus /qn
```

To specify Setup.exe:

```
%OLY1%\%ODMS_R6%\Setup.exe /v"/qn"
```

3. Modify logon script of the target users

Add the batch file to the logon script. Setting up of server side is done.

4. Log in to domain with the target user account registered in previous step.

When logging on from client PC, logon script is read and the installation is performed automatically

■ When Silent Installation is Not Available

Where domain controller is not available, distribution method as introduced above is not possible. In this case, software module must be updated by installing the software from ODMS R6 Clients CD on each client PC individually.

6.3.3 Automatic Update Using SCP (Workgroup Configuration Only)

To perform automatic software update for ODMS R6 WorkGroup mode, use the System Configuration Program (SCP) to assign the latest software package to deploy to the users/groups.



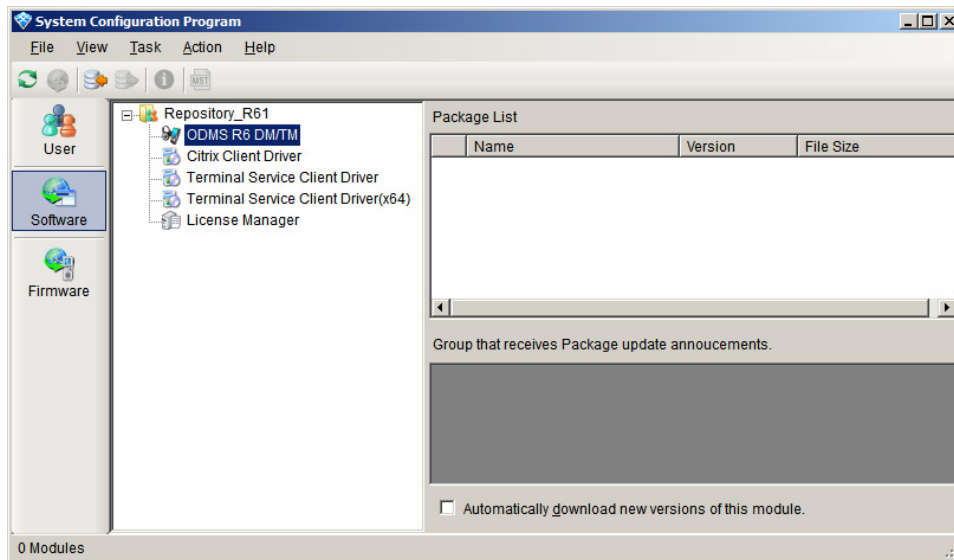
The ODMS R6 SCP supports updating of DSS Player Pro R5 and the ODMS R6 Dictation Module/Transcription Module. However, update using SCP is supported only for updating within the same version.

For information about upgrading the DSS Player Pro R5 Dictation Module/Transcription Module to ODMS R6, refer to “6.1 Upgrade from DSS Player Pro R5/R4 Standalone System” and “6.2 Upgrade from DSS Player Pro R5 Workgroup System”.

■ Procedure

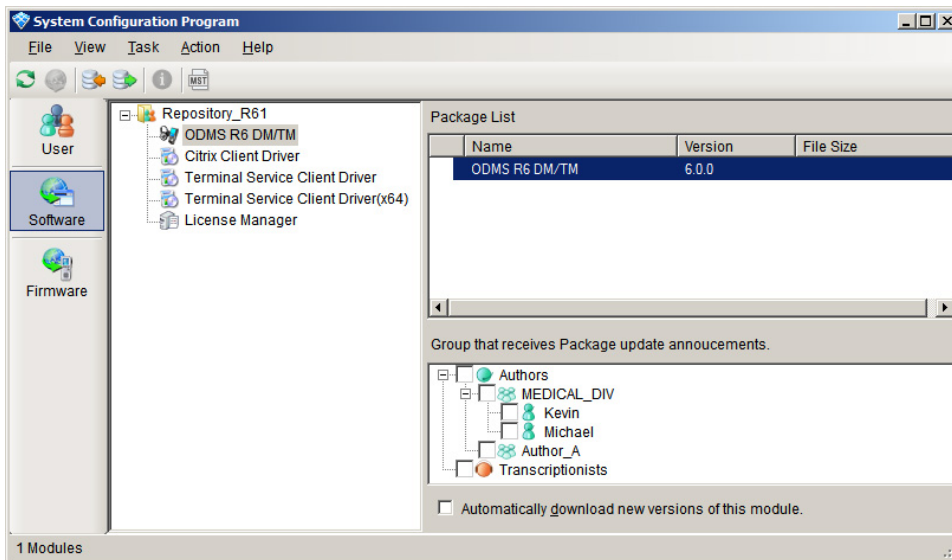
1. From the Windows Start menu, select [All Programs] - [Olympus Manager Tool] – [System Configuration Program].

Select [Software] from the left side columns as shown below.

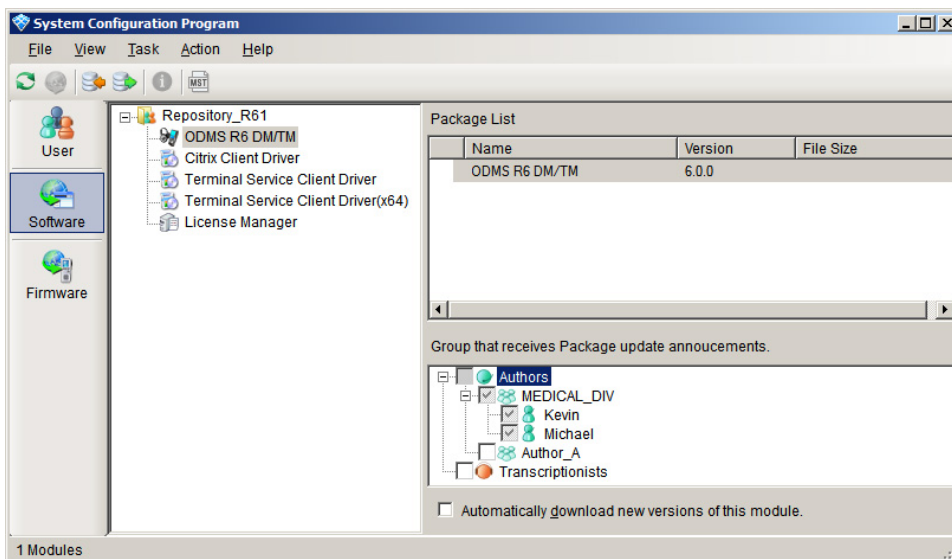


2. From SCP menu, select [Action] – [Add]. A dialog box appear, select “ODMSClient.msi” from ODMS R6 Clients CD.

➔ ODMSClient.msi is registered and listed in the “Package List” pane once you make you selection.



3. Specify distributed groups and/or individual users.




In addition to the ODMS R6 client, the ODMS R6 SCP can also manage a DSS Player Pro R5 update. However, a DSS Player Pro R5 user who is using the Dictation Module/Transcription Module of R5.0.6 or lower cannot update settings to individual user (group-unit settings only are supported).

	<p>ODMS R6 System Configuration Program user setting management functions support the latest version of DSS Player Pro R5.</p> <p>When updating a DSS Player Pro R5 client, updating to the latest version of DSS Player Pro R5 is recommended.</p>
--	---

The table below lists the meanings of the icons that appear on the display for DSS Player Pro R5 update management. With ODMS R6 update management, the update settings of all individual users can be configured, regardless of the Dictation Module/Transcription Module version being used.

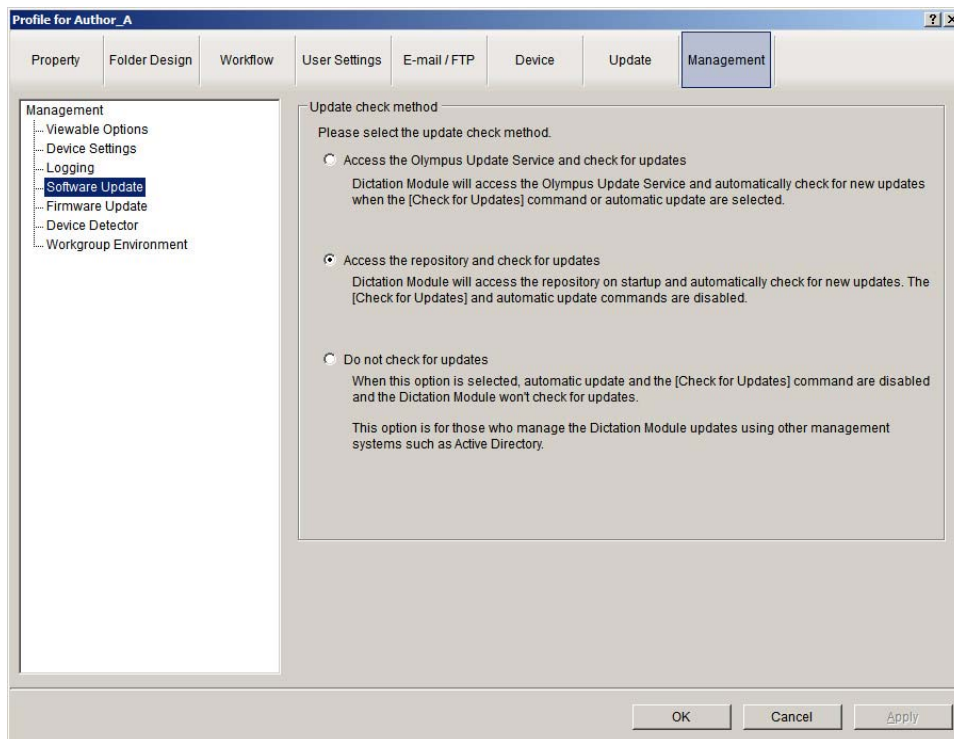
	It is possible to individually distribute packages to the users with R5.0.6 or later who do not even belong to a group.
	It is possible to distribute to the users with R5.0.5 or earlier who only belong to a

	group. By setting the distribution to anyone of the users who belongs to a group, the distribution is assigned to all of the users in the group. It will be the same even if set not to distribute.
	<p>This icon is for the users with R5.0.6 or later who never start DM/TM and for the users with R5.0.5 or earlier.</p> <p>The same icon is also displayed when ODMS R6 user profiles are present in the DSS Player Pro R5 repository.</p> <p>In this case, it is necessary that the user belong to any group with User Task and to make the distribution setting with Software Task.</p>

4. Specify the update check method in the group or user profile.

Select [User] from the left side columns of SCP, and open user/group profile. Then select [Management] button and [Software Update] in the tree.

➔ Select “Access the repository and check for updates”.



5. Click [OK]. The assignment is complete. The application will be updated on next startup.

7 Installing File Downloader

This chapter explains the procedure for installing File Downloader. You can install File Downloader using a CD or Active Directory Services.

- Installation using a CD needs to be performed on individual PCs.
- With the distribution method used by Active Directory Services, once settings are configured with the Active Directory domain controller, the installer automatically performs installation when each client PC is started up.

This chapter explains the procedure for installation using the CD.

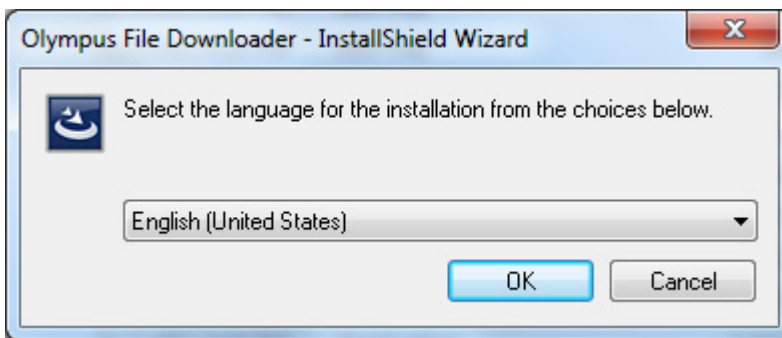
To perform auto distributed installation using Active Directory, configure settings using the same procedure as that for the Dictation Module and Transcription Module. For details, refer to ["5 Silent Install"](#).

7.1.1 New Installation

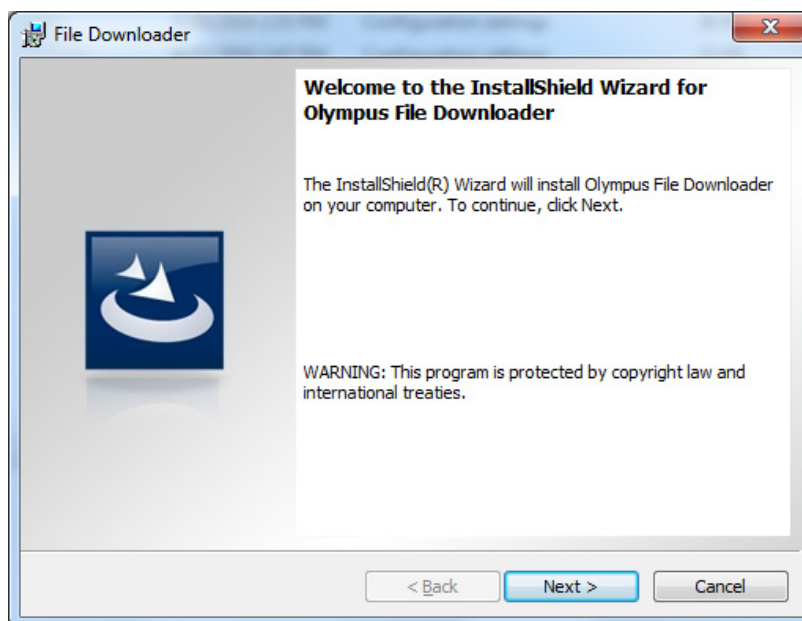
Perform the following procedure for a new File Downloader installation.

■ Procedure

1. Insert the ODMS R6 Clients CD, and then use Explorer to execute the file below.
<CD_Root>¥FileDownloader¥setup.exe

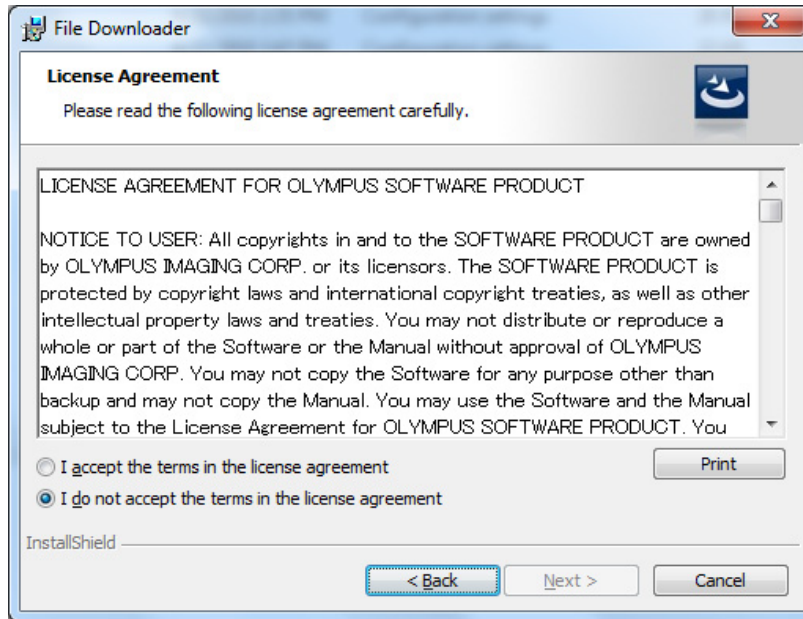


- ➔ The installation program will start, and a language selection dialog box will appear.
2. Select the language you want to use during installation, and then click [OK].
- ➔ The installation program will automatically start, and a welcome dialog box will appear.



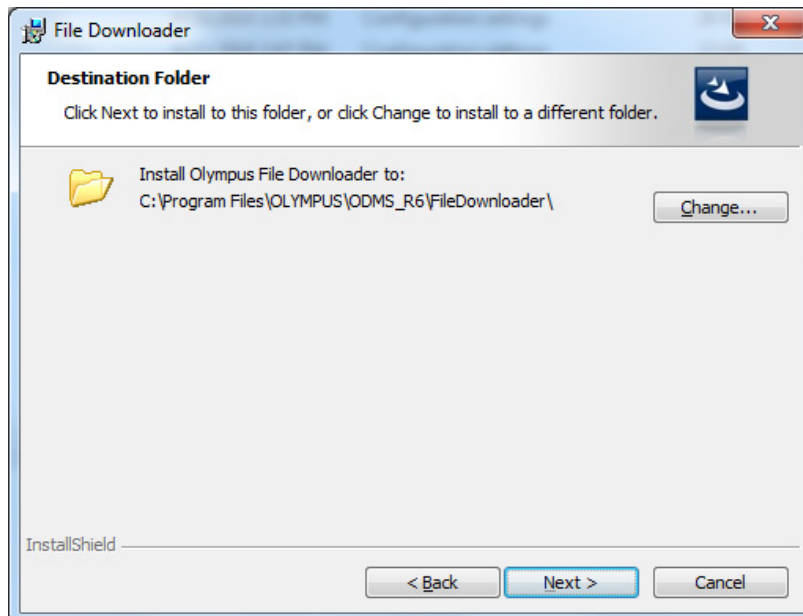
3. Click [Next].

➔ The License Agreement dialog box will appear.



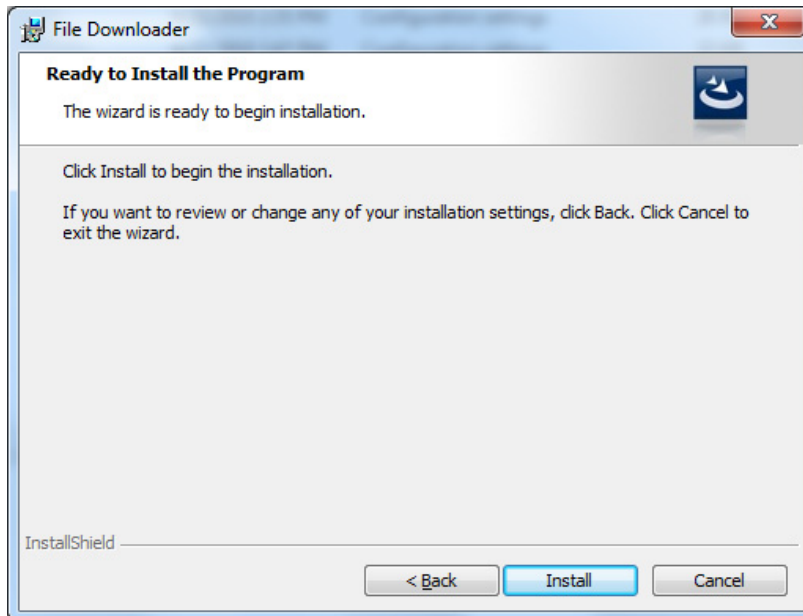
4. Accept the license agreement, and then click [Next].

➔ The Destination Folder dialog box will appear.



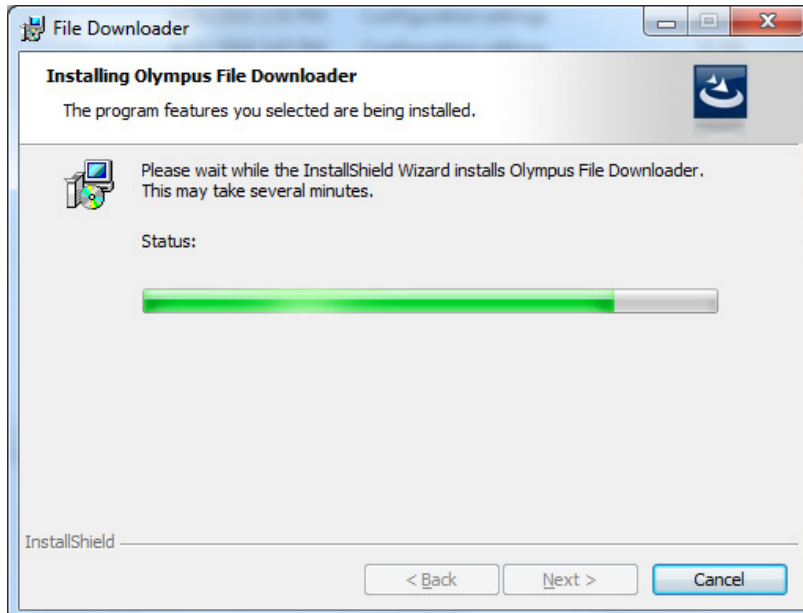
5. Specify a program folder for installation, and then click [Next].

→ The final confirmation screen will appear.

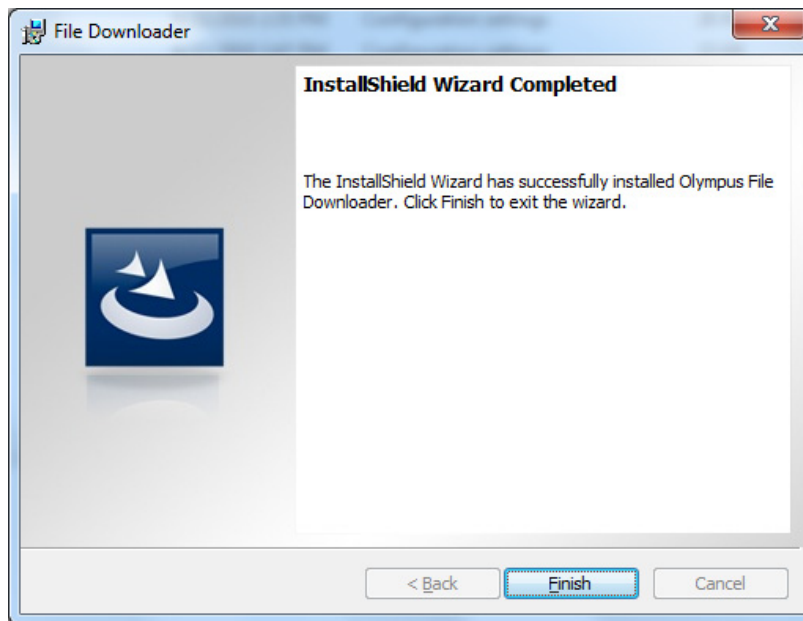


6. Check installation information.

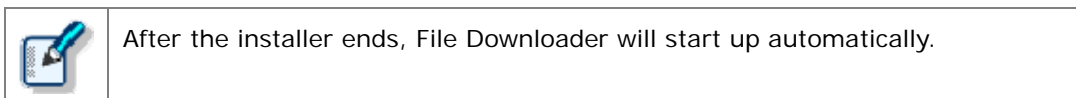
→ A progress bar is displayed in a dialog box during the installation.



→ When the installation is complete, the InstallShield Wizard Completed dialog box will appear.



7. Click [Finish].



7.1.2 Starting the Program

File Downloader starts up automatically whenever the PC is started, and remains resident in the system. File Downloader can also be started up by performing the menu operation shown below.

- [Start] - [All Programs] - [Olympus Dictation Management System] - "File Downloader"

8 Reference Information

This section provides reference information.

8.1 How to Use Installation Options

Any one of the following methods can be used to configure installation option settings when installing the Dictation Module and/or Transcription Module.

Location	Description
Command line	<code>msiexec /I <full path of msi> SYSTEM=STANDALONE...</code> By adding options, the application can be installed at the command prompt.
MST file	Options can be specified with an MST file created by System Configuration Program. Please specify the path to the MST file. <code>msiexec /I <network path to .msi> TRANSFORMS= <network path to .mst></code> For how to create an MST file, refer to Help of System Configuration Program.
Setup.ini	When installing using Setup.exe, options added in the Start-up section in Setup.ini will be reflected automatically. Example: [Startup] SYSTEM=STANDALONE :

8.1.1 MSI Installation Options

The table below shows the installation options of the Olympus Dictation Management System installer.

Installation options of MSI are described as Option = Value.

For standalone configuration, the following options apply:

Option	Value	Default value	Description
SYSTEM	{ STANDALONE WORKGROUP }	STANDALONE	Select the system to be installed This table describes available options when "STANDALONE" is specified for SYSTEM option.
USER	User name (string)	-	Specifies the application user name. The user name defined on the PC is used if one is not specified.
COMPANYNAME	Company name (string)	-	Specifies the company name of the application user. Company name defined on the PC is used if one is not specified.
LICENSE	License file name (String)	-	Specifies the license file name. Though the license file name can be anything you like, it must be located in the same folder as ODMSClient.msi. "LICENSE.DAT" is used if one is not specified.
DEST	Application installation folder (string)	-	Use this option when you need to specify the installation folder. If you do not specify a folder, the application will be installed in %Program Files%\Olympus\ODMS_R6\DM_TM.
SETTING	{ INDIVIDUAL ALLUSER }	INDIVIDUAL	Specifies whether environment settings or audio files are stored for each log-in user or stored as shared files.

For workgroup configuration, the following options apply:

Option	Value	Default value	Description
SYSTEM	{ STANDALONE / WORKGROUP }	STANDALONE	Select the system to be installed This table describes available options when "WORKGROUP" is specified for SYSTEM option.
USER	User name (string)	-	Specifies the application user name. The user name defined on the PC is used if one is not specified.
COMPANYNAME	Company name (string)	-	Specifies the company name of the application user. Company name defined on the PC is used if one is not specified.
DEST	Application installation folder (string)	-	Use this option when you need to specify the installation folder. If you do not specify a folder, the application will be installed in %Program Files%\Olympus\ODMS_R6\DM_TM.

SETTING	{ INDIVIDUAL ALLUSER REPOSITORY REPOSITORYSERVICE }	REPOSITORY	Specifies whether environment settings or audio files are stored for each log-in user or stored as shared files. When "REPOSITORY" is specified, the environment is managed by the repository and voice data is managed by users.
REPOSITORY	Repository folder name (string)	-	Specifies as ¥¥{ PC name}¥{ Repository folder}. When "REPOSITORY" is specified in the SETTING option or SETTING option is not specified, be sure to specify REPOSITORY option. If other than "REPOSITORY" is specified in the SETTING option, the REPOSITORY option is ignored.
RS_ADDRESS	Repository service PC name (string)	-	This setting is required when REPOSITORYSERVICE is specified for the SETTING option. It specifies the name of the PC running Repository Service. You can use the PC name or IP address (Ipv4).
RS_PORT	Repository service port number (string)	-	This setting is required when REPOSITORYSERVICE is specified for the SETTING option. It specifies the port number for running Repository Service.
LM	License manager PC name (string)	-	Specifies the name of PC or IP address to which License Manager is installed. For Workgroup system, licenses are managed by License Manager so this must be specified.
PORT	Port number (string)	80	Displays the port number of License Manager
MODULE	{ ALL DM TM }	ALL	Selects the application to be installed. When "ALL" is selected, both DM and TM are installed.

8.1.2 Example Installation Options

Examples of installation options are described here. (Distribution source server name: ShareServer/Shared folder: ODMS)

When Dictation Module is installed from the command prompt in standalone system mode

```
msiexec /i ¥¥ShareServer¥ODMS¥..¥ODMSClient.msi SYSTEM=STANDALONE USER=AUTHOR_A
COMPANYNAME=OLYMPUS SETTING=INDIVIDUAL
```

When workgroup system is installed from the command prompt (Using Repository Service)

```
msiexec /i ¥¥ShareServer¥ODMS¥..¥ODMSClient.msi SYSTEM=WORKGROUP USER=AUTHOR_A
COMPANYNAME=OLYMPUS SETTING=REPOSITORYSERVICE RS_ADDRESS=192.168.0.1
RS_PORT=8000 LM=LICENSESERVER PORT=80 /qn
```

When workgroup system is installed from the command prompt (Repository used)

```
msiexec /i %ShareServer%\ODMS\..\ODMSClient.msi SYSTEM=WORKGROUP MODULE=DM  
SETTING=REPOSITORY REPOSITORY=%ShareServer%\Repository LM=OLYSERV PORT=8000  
/qn
```

Installation when a license file is specified (renamed to something other than LICENSE.DAT)

```
msiexec /i %ShareServer%\ODMS\..\ODMSClient.msi SYSTEM=STANDALONE  
LICENSE=ODMS_LIC.DAT SETTING=INDIVIDUAL
```



When a space is included in the path and/or name of an option, enclose the parameter in quotation marks (" ").

8.2 How To Open a Port on the Firewall

In cases where the firewall is managed with the Active Directory group policy, the firewall has to be set on the server. For networks not managed with Active Directory, settings have to be configured on each individual PC.

When Creating Settings with the Active Directory Group Policy

■ Procedure (for Windows XP)

1. From the Windows Start menu, select [Control Panel] – [Network and Internet Connections], then “Windows Firewall.”
2. Click the “Exception” tab, and then click [Add port].
3. Set the name, TCP/UDP, and port number of the exception port.

When Creating Settings on Client PCs

■ Procedure (for Windows XP)

1. From the Windows Start menu, select [Control Panel] – [Network and Internet Connections], then “Windows Firewall.”
2. Click the “Exception” tab, and then click [Add port].
3. Set the name, TCP/UDP, and port number of the exception port.

9 Troubleshooting

Refer to this chapter to find solutions to problems.

9.1 Launcher Not Starting

When the CD is inserted, if the launcher does not start, it means that the auto start CD setting may not be enabled.

Use the following procedure to manually start the launcher.

■ Procedure

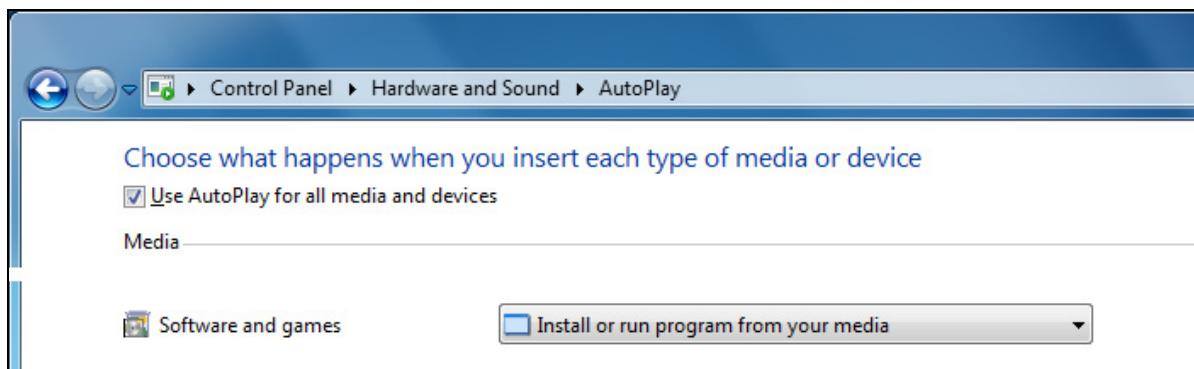
1. In the Windows Start menu, select [Computer], and then open the CD-ROM drive.
2. On the CD, double-click Launcher.exe.

How to Make Auto Start CD Work

To make auto start of the CD work for subsequent attempts, make the following settings:

■ Procedure (Windows Vista/7/8)

1. On the Windows Start menu, click [Control Panel] – [Hardware and Sound] – [AutoPlay].
2. Select the [Use AutoPlay for all media and devices] check box. Alternatively, change the [Software and games], setting to “Install or run program from your media.”



3. Click [Save].

■ Procedure (Windows XP)

1. From the Windows Start menu, select [Run...], and then enter "GPEDIT.MSC".
2. In the Group Policy, select "Local computer policy," "Management template," then "System," and then select "Disable auto play function."
3. Right-click the CD and select "Property" on the context menu.

4. In the dialog box, select "Enable" in the dialog box, and then click [OK].

9.2 If Default Port Number Is Being Used by IIS or Other Service

When installing a workgroup system, the standard port number may have already been used by IIS (Internet Information Service) or other services.

If this is the case, specify a port number other than the standard port numbers (for HTTP, 80; for HTTPS, 443) during installation.

9.3 Cannot Launch Dictation Module or Transcription Module

After Dictation Module and/or Transcription Module have been installed in a Workgroup System, they can be used for 60 days without connection to the license server. Once 60 days elapse, however, they can no longer be started.

The server administrator needs to check that settings regarding connection to the license server, the license server name, port number, firewall settings, and other information are appropriate.

9.4 Cannot Install

The following cases are possible if Dictation Module/Transcription Module installation fails.

Trying to Install with a Copy of the Installer on Media Other Than the Original CD.

When installing from media other than the original CD, be sure to copy the installer to your hard disk and install from there. Trying to install from USB memory or any other media other than your hard disk can cause installation to fail.

Client Virtual Driver Is Already Installed.

The Client Virtual Driver and Dictation Module/Transcription Module that comes with the ODMS R6 Administrators CD cannot be installed on the same PC. Before installing the Dictation Module and/or Transcription Module, uninstall Client Virtual Driver from the PC.

DSS Player Pro R4 or an Earlier Version Is Already Installed.

Direct upgrade to ODMS R6 is not possible from DSS Player Pro R4 or any earlier version.

Either upgrade to DSS Player Pro R5 and then to ODMS R6, or uninstall DSS Player Pro and then perform a new ODMS R6 install.

10 Support Contacts

Inquiries Regarding Purchase of License Keys

To purchase the following license keys, please contact your dealer or distributor.

- Dictation Module multi-license key
- Transcription Module multi-license key

Inquiries Regarding Malfunctions

When making an inquiry, please let us know the following information and a detailed description of the problem.

- Type of PC (manufacturer and model name)
- Memory capacity
- Hard disk space
- OS and version
- Connected peripheral devices

For assistance in solving a problem such as a malfunction, please contact your dealer or distributor.

Other Support

Various types of information, including product specifications, PC connections, support for operating systems, and FAQs, is available on our Web site. For the latest information, please visit the Olympus Web site at <http://www.olympus-global.com/en/global/>.



The information provided may be subject to change without notice.

